

Auto Parts



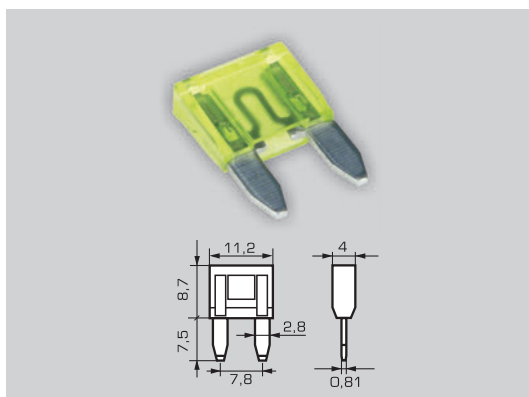
AC Spółka Akcyjna

INDEX

PAGE:	
3 - 7.	FUSES
8 - 9.	FUSES SETS
10 - 14.	FUSEHOLDERS
15.	HOSE CLAMPS
16.	CABLE TIES
17 - 19.	ACCESSORIES FOR ELECTROTECHNICS
20 - 22.	TERMINALS
23 - 26.	INSULATED TERMINALS
27 - 37.	CONNECTORS
38 - 44.	CAR ELECTRONIC
45 - 52.	ELECTROTECHNICS
53 - 57.	ROTATING BEACONS AND ADAPTERS SOCKETS
58 - 59.	HORNS
60 - 61.	TACHOGRAPH ACCESSORIES
62 - 65.	PLUGS AND SOCKETS
66.	TRAILER CABLES
67 - 68.	ADAPTERS
69 - 71.	SPIRAL COILS
72 - 75.	VARIOUS ACCESSORIES

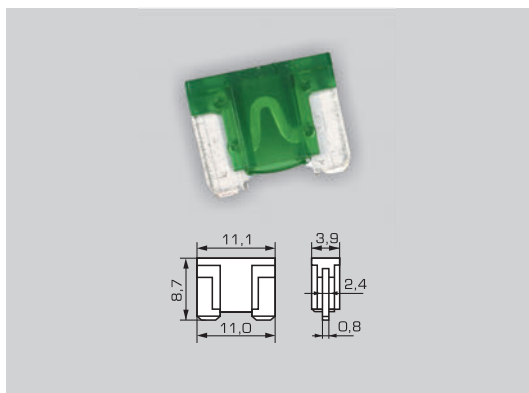
FUSES

MINIVAL®



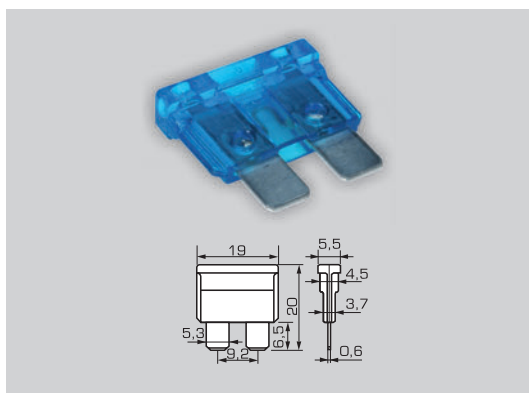
In	Colour	Order No. Basic Pack.	PCs	Order No. Bulk Pack.	PCs
2 A	grey	TBM-02HD	25	TBM-02MW	200
3 A	violet	TBM-03HD	25	TBM-03MW	200
4 A	pink	TBM-04HD	25	TBM-04MW	200
5 A	beige	TBM-05HD	25	TBM-05XW	5000
7,5 A	brown	TBM-07HD	25	TBM-07XW	5000
10 A	red	TBM-10HD	25	TBM-10XW	5000
15 A	blue	TBM-15HD	25	TBM-15XW	5000
20 A	yellow	TBM-20HD	25	TBM-20XW	5000
25 A	white	TBM-25HD	25	TBM-25XW	5000
30 A	green	TBM-30HD	25	TBM-30XW	5000

**MINIVAL®
LOW PROFILE**



In	Colour	Order No. Basic Pack.	PCs	Order No. Bulk Pack.	PCs
2 A	grey	TBN-02EF	10	TBN-02MW	200
3 A	violet	TBN-03EF	10	TBN-03MW	200
4 A	pink	TBN-04EF	10	TBN-04MW	200
5 A	beige	TBN-05EF	10	TBN-05MW	200
7,5 A	brown	TBN-07EF	10	TBN-07MW	200
10 A	red	TBN-10EF	10	TBN-10MW	200
15 A	blue	TBN-15EF	10	TBN-15MW	200
20 A	yellow	TBN-20EF	10	TBN-20MW	200
25 A	white	TBN-25EF	10	TBN-25MW	200
30 A	green	TBN-30EF	10	TBN-30MW	200

UNI

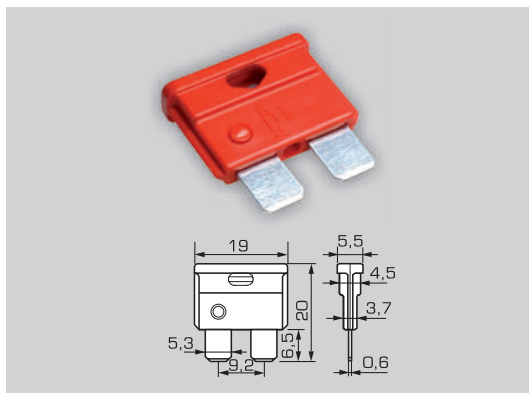


In	Colour	Order No. Basic Pack.	PCs	Order No. Basic Pack.	PCs	Order No. Bulk Pack.	PCs
3 A	violet	TBP-03JNI	50	TBP-03KBI	100	TBP-03XWI	5000
5 A	beige	TBP-05JNI	50	TBP-05KBI	100	TBP-05XWI	5000
7,5 A	brown	TBP-07JNI	50	TBP-07KBI	100	TBP-07XWI	5000
10 A	red	TBP-10JNI	50	TBP-10KBI	100	TBP-10XWI	5000
15 A	blue	TBP-15JNI	50	TBP-15KBI	100	TBP-15XWI	5000
20 A	yellow	TBP-20JNI	50	TBP-20KBI	100	TBP-20XWI	5000
25 A	white	TBP-25JNI	50	TBP-25KBI	100	TBP-25XWI	5000
30 A	green	TBP-30JNI	50	TBP-30KBI	100	TBP-30XWI	5000

On special request we can deliver all types of MTA fuses.

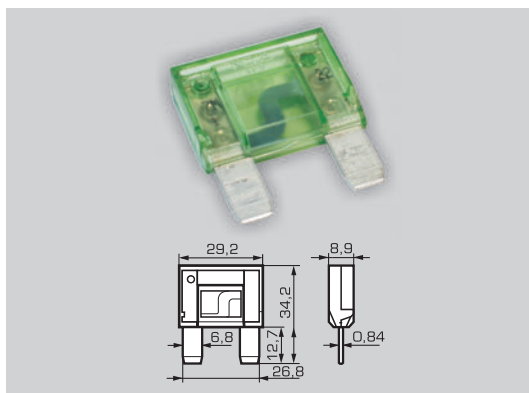
FUSES

UNI^{VAL}®



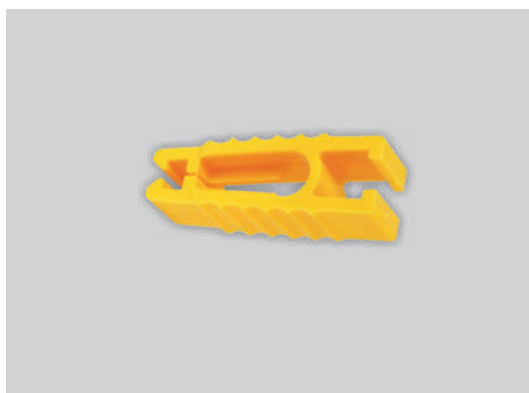
In	Colour	Order No. Basic Pack.	PCs
1 A	black	TBPM01KB	100
2 A	grey	TBPM02KB	100
40 A	orange	TBPM40KT	100

MAXI^{VAL}®



In	Colour	Order No. Basic Pack.	PCs	Order No. Bulk Pack.	PCs
20 A	yellow	TBW-20EN	10	TBW-20SW	1000
30 A	green	TBW-30EN	10	TBW-30SW	1000
40 A	orange	TBW-40EN	10	TBW-40SW	1000
50 A	red	TBW-50EN	10	TBW-50SW	1000
60 A	blue	TBW-60EN	10	TBW-60SW	1000
70 A	beige	TBW-70EN	10	TBW-70SW	1000
80 A	white	TBW-80EN	10	TBW-80SW	1000
100 A	violet	TBW-99ET	10	TBW-99SW	1000

**Extractor
for blade fuses**

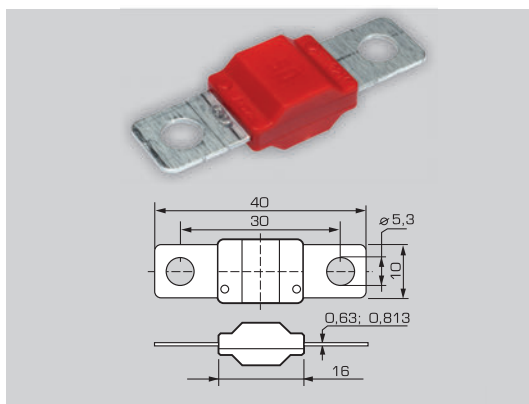


Order No.	PCs
TWS-13JB	50

On special request we can deliver all types of MTA fuses.

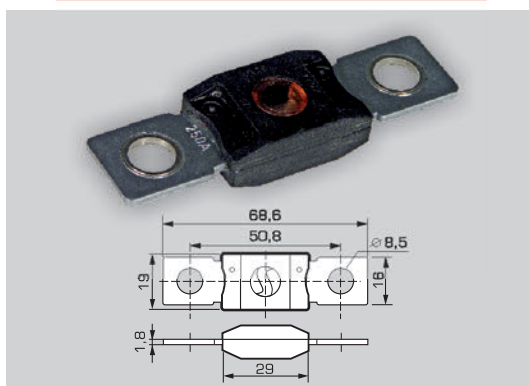
FUSES

MIDI VAL[®]



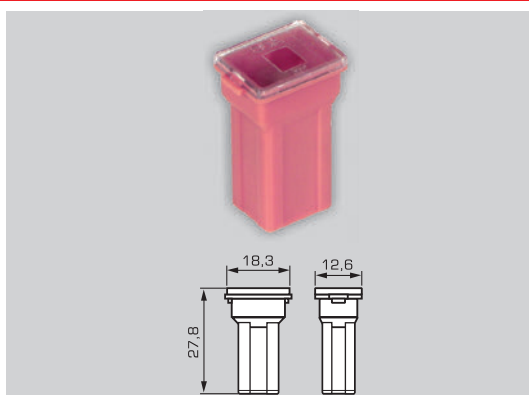
In	Colour	Order No. Basic Pack.	PCs	Order No. Bulk Pack.	PCs
30 A	pink	TBX030AT	1	TBX030SW	1000
40 A	green	TBX040AT	1	TBX040SW	1000
50 A	red	TBX050AT	1	TBX050SW	1000
60 A	yellow	TBX060AT	1	TBX060SW	1000
70 A	brown	TBX070AT	1	TBX070SW	1000
80 A	white	TBX080AT	1	TBX080SW	1000
100 A	blue	TBX100AT	1	TBX100SW	1000
125 A	orange	TBX125AT	1	TBX125SW	1000

MEGA VAL[®]



In	Colour	Order No. Basic Pack.	PCs
100 A	yellow	TBY100AT	1
125 A	green	TBY125AT	1
150 A	orange	TBY150AT	1
175 A	white	TBY175AT	1
200 A	blue	TBY200AT	1
225 A	beige	TBY225AT	1
250 A	pink	TBY250AT	1
500 A	brown	TBY500AT	1

JAP VAL[®]
type MINI FEMALE

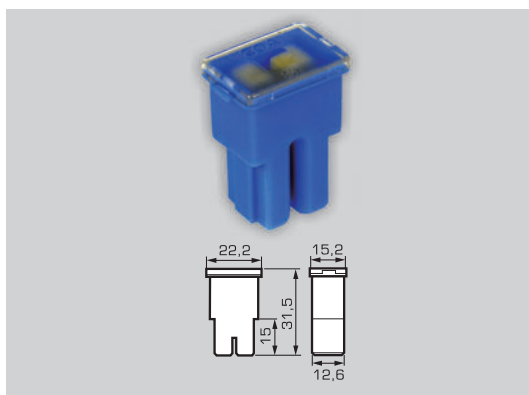


In	Colour	Order No. Basic Pack.	PCs
30 A	pink	TBIM30ET	10
40 A	green	TBIM40ET	10

On special request we can deliver all types of MTA fuses.

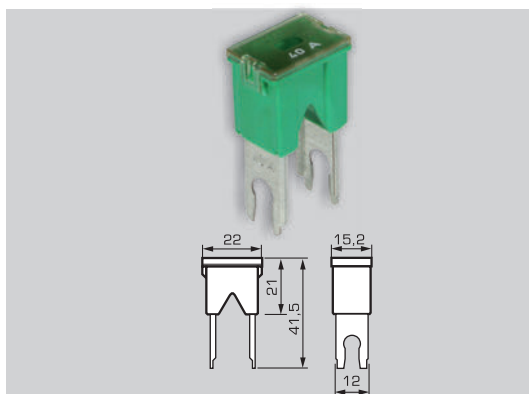
FUSES

JAPVAL®
type „F”



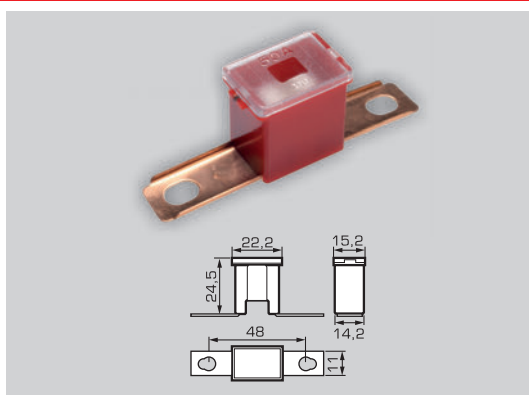
In	Colour	Order No. Basic Pack.	PCs
20 A	light blue	TBI-20ET	10
30 A	pink	TBI-30ET	10
40 A	green	TBI-40ET	10
50 A	red	TBI-50ET	10
60 A	yellow	TBI-60ET	10
80 A	black	TBI-80ET	10
100 A	blue	TBI-99ET	10

JAPVAL®
type „M”



In	Colour	Order No. Basic Pack.	PCs
30 A	pink	TBJ-30ET	10
40 A	green	TBJ-40ET	10
50 A	red	TBJ-50ET	10
60 A	yellow	TBJ-60ET	10
80 A	black	TBJ-80ET	10
100 A	blue	TBJ-99ET	10

JAPVAL®
type MALE 62

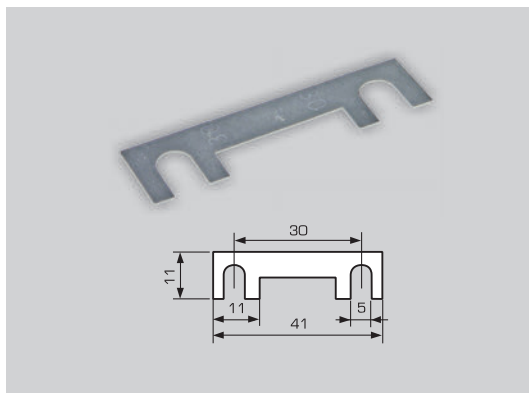


In	Colour	Order No. Basic Pack.	PCs
30 A	pink	TBK-30ET	10
40 A	green	TBK-40ET	10
50 A	red	TBK-50ET	10
60 A	yellow	TBK-60ET	10
80 A	black	TBK-80ET	10
100 A	blue	TBK-99ET	10

On special request we can deliver all types of MTA fuses.

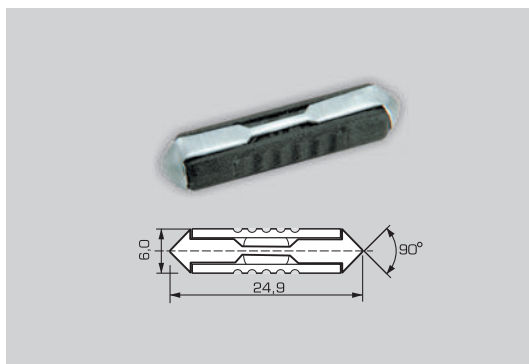
FUSES

Strip Zn



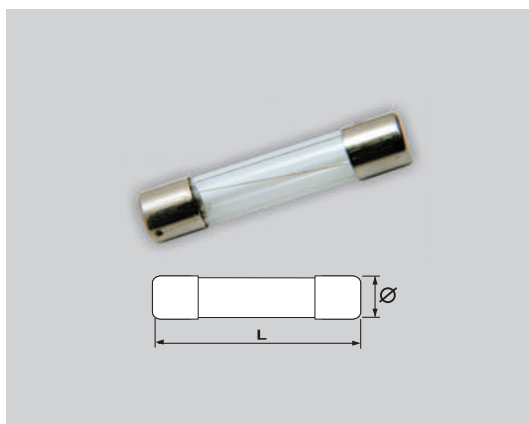
In	[mm]	Order No. Basic Pack.	PCs
30 A	0,20	TBT-30KT	100
40 A	0,25	TBT-40KT	100
50 A	0,35	TBT-50KT	100
60 A	0,40	TBT-60KT	100
80 A	0,50	TBT-80KT	100
100 A	0,55	TBT-99KT	100

Continental



In	Colour	Order No. Basic Pack.	PCs	Order No. Bulk Pack.	PCs
8 A	black	TBC-08KBM	100	TBC-08XW	5000
16 A	green	TBC-16KBM	100	TBC-16XW	5000
25 A	brown	TBC-25KBM	100	TBC-25XW	5000

**Glass
12V-24V**



Ø x L [mm]	In	Order No. Basic Pack.	PCs	Order No. Bulk Pack.	PCs
5x20	2 A	TBF-02JD	50	TBF-02SW	1000
	5 A	TBF-05JD	50	TBF-05SW	1000
	10 A	TBF-10JD	50	TBF-10SW	1000
	15 A	TBF-15JT	50	-	-
6,3x32	5 A	TBG-05JN	50	TBG-05SW	1000
	7,5 A	TBG-07JT	50	-	-
	10 A	TBG-10JN	50	TBG-10SW	1000
	15 A	TBG-15JN	50	TBG-15SW	1000
	20 A	TBG-20JN	50	TBG-20SW	1000
	25 A	TBG-25JN	50	TBG-25SW	1000

On special request we can deliver all types of MTA fuses.

FUSES SETS

**UNI blade
fuses set
(10PCs)**



Order No.
TBZ-02EGI

5A	7,5A
7,5A	10A
10A	15A
15A	20A
25A	30A

Order No.
TBZ-02QGI

5A	7,5A
7,5A	10A
10A	15A
15A	20A
25A	30A

with extractor

**MINI blade
fuses set (8PCs)**



Order No.
TBZ-03QGI

7,5A	10A
10A	15A
15A	20A
20A	30A

On special request we can deliver all types of MTA fuses.

FUSES SETS

**Continental
fuses set
(20PCs)**



Order No.
TBZ-01GGS

8A 8A	8A 8A
8A 8A	8A 8A
16A 16A	16A 16A
16A 16A	16A 16A
25A 25A	16A 16A

**Glass fuses
set *RAPID*
(6PCs)**



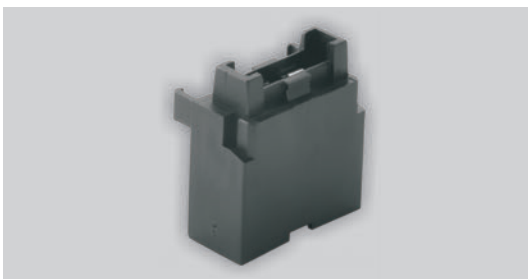
Order No.
TBZ-11QGS

2A	5x20	1PCs
10A	6,3x32	2PCs
15A	6,3x32	2PCs
20A	6,3x32	1PCs

On special request we can deliver all types of MTA fuses.

FUSEHOLDERS

UNI fuse holder



Order No.	PCs
TWS-09JB	50
TWS-09QW	1250

Cover for UNI fuse holder



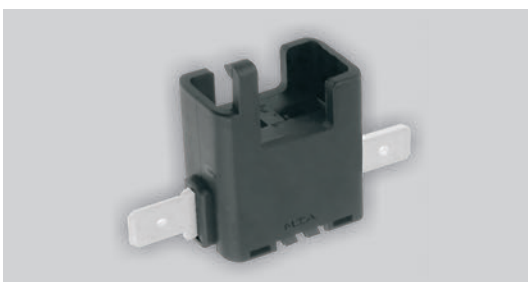
Order No.	PCs
TWS-22HB	25
TWS-22RW	500

UNI fuse holder „IN LINE“



Order No.	PCs
TWS-12JB	50
TWS-12SW	1000

UNI fuse holder „NKA“



Order No.	PCs
TWS-26JB	50
TWS-26TW	2000

FUSEHOLDERS

**4-way *UNI*
fuse holder
[00540]**



Order No.

PCs

TWS-42AT

1

**6-way *UNI*
fuse holder
[00560]**



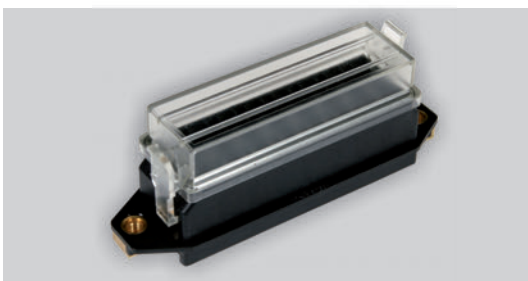
Order No.

PCs

TWS-16AT

1

**8-way *UNI*
fuse holder
[00580]**



Order No.

PCs

TWS-14EB

10

**16-way *UNI*
fuse holder
[00655]**



Order No.

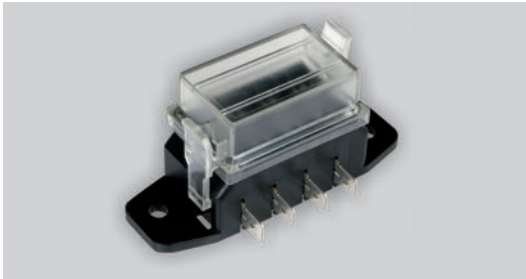
PCs

TWS-50AT

1

FUSEHOLDERS

4-way *UNI*
fuse holder
[00610]



Order No.	PCs
TWS-23AT	1

6-way *UNI*
fuse holder
[00600]



Order No.	PCs
TWS-17AT	1

8-way *UNI*
fuse holder
[00590]



Order No.	PCs
TWS-02EB	10

4-way relay
holder
[00665]



Order No.	PCs
TWS-39AT	1

FUSEHOLDERS

Waterproof
MINI
fuse holder



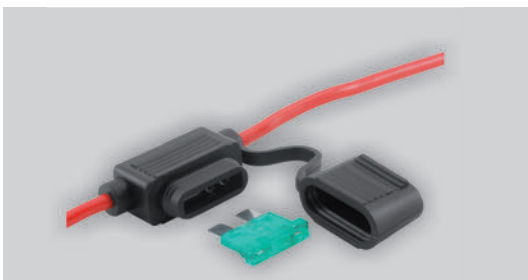
Order No.

PCs

TWS-31DT

5

Waterproof
UNI
fuse holder



Order No.

PCs

TWS-30DB

5

Waterproof
MAXI
fuse holder



Order No.

PCs

TWS-32AT

1

Continental
fuse holder



Order No.

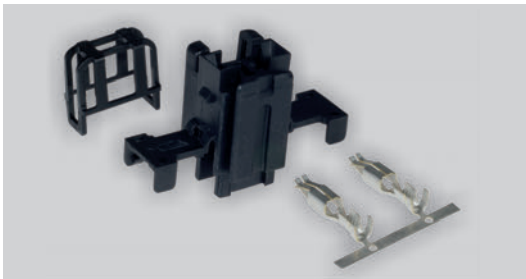
PCs

TWS-33JB

50

FUSEHOLDERS

MINI
fuse holder
(set with terminals)



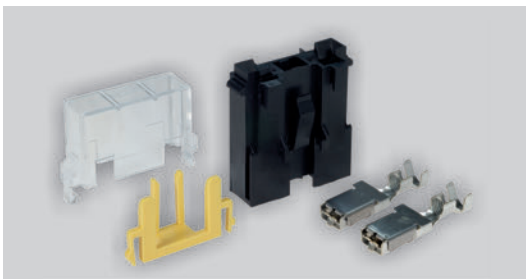
Order No.

TWS-60AB

Set PCs

1

MAXI
fuse holder
(set with terminals)



Order No.

TWS-00AB

Set PCs

1

Fuse holder
MIDI / Strip
complete



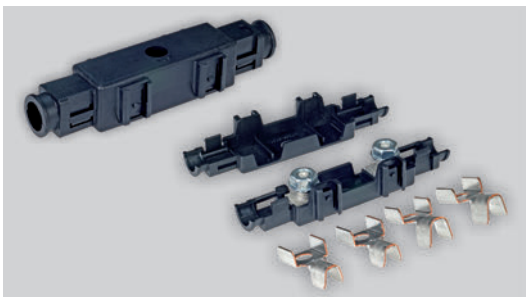
Order No.

TWS-25EB

PCs

10

MEGA
fuse holder



Order No.

TWS-44AT

PCs

1

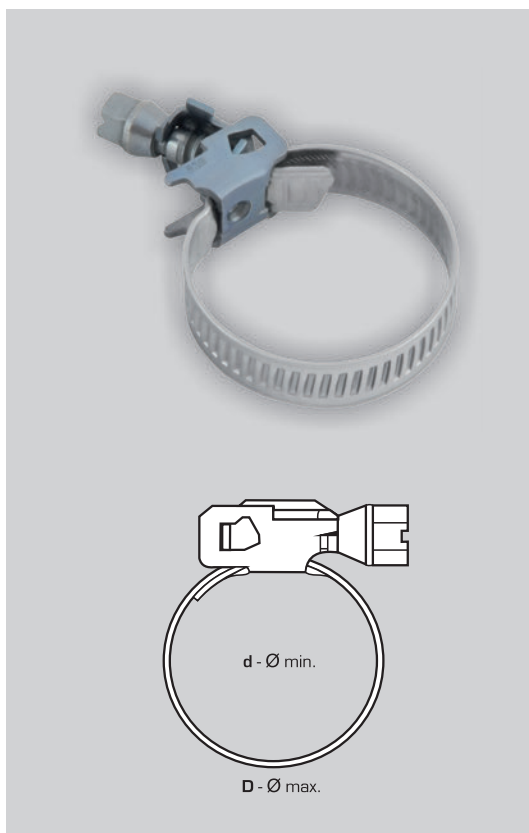
HOSE CLAMPS

Hose clamps *HOP*



	Diameter [mm]		Band width	Order No.	PCs
	d	D			
HOP 5	7	11	5	TRC-01KL	100
	9	14	5	TRC-02KL	100
	10	19	5	TRC-03KL	100
HOP 8	6	12	8	TRC-05KL	100
	8	16	8	TRC-06KL	100
	12	22	8	TRC-07JL	50
	16	27	8	TRC-08JL	50

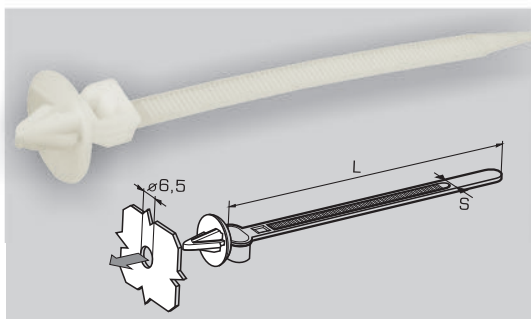
Hose clamps *NEMO*



	Diameter [mm]		Band width	Order No.	PCs
	d	D			
	16	27	9	TRC-09JB	50
	20	35	9	TRC-10JB	50
	20	40	9	TRC-11JB	50
	20	47	9	TRC-12JB	50
	30	50	9	TRC-13HB	25
	30	60	9	TRC-14HB	25
	40	70	9	TRC-15HB	25
	40	80	9	TRC-16HB	25
	40	90	9	TRC-17HB	25
	60	100	9	TRC-18HB	25
	60	115	9	TRC-19HB	25
	60	125	9	TRC-20HB	25
	60	145	9	TRC-21HB	25
	60	175	9	TRC-22HB	25
	60	215	9	TRC-23EB	10
	60	288	9	TRC-24EB	10
	60	320	9	TRC-25EB	10
	60	370	9	TRC-26EB	10
	60	420	9	TRC-27EB	10
	60	540	9	TRC-28EB	10
	60	650	9	TRC-29EB	10
	60	750	9	TRC-30EB	10

CABLE TIES

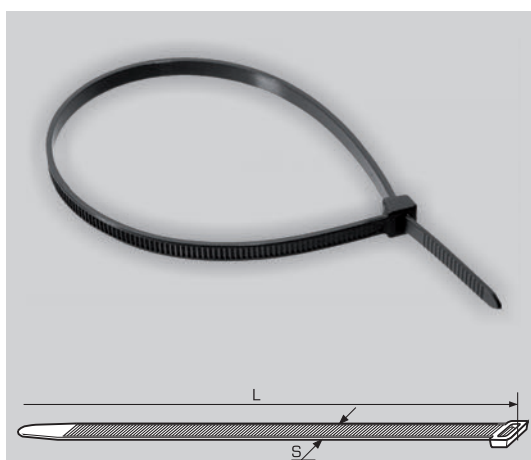
Cable ties /white/



L [mm]	S [mm]	Max. diameter of clamped hose [mm]	Order No.	PCs
100	6	16	TRZ-02MT	200

Material: polyamide - nylon
Resistance to: UV, oils, alkalies, salt

Plastic cable ties /black/



RX Serie

Technical data:

Operation temperature: -35°C do +85°C

Flame resistance: UL94 class V2

Material: polyamide 6/6

Resistance to: UV, oils, grease, salt, thin acids

RZ Serie

Technical data:

Operation temperature: -40°C do +40°C

Max. accepted peak [for short]: +105°C

Min. mounting temperature: 0°C

Material: polyamide - nylon

Resistance to: UV, oils, alkalies, salt, moisture, light ageing

RX Serie				RZ Serie				
L [mm]	S [mm]	Order No.	PCs	L [mm]	S [mm]	Symbol	Order No.	PCs
80	2,4	TRX-38KT	100	75	2,2	4621100	TRZ-40KT	100
100	2,5	TRX-40KT	100	98	2,5	4621110	TRZ-41KT	100
120	2,5	TRX-41KT	100	135	2,5	4621120	TRZ-42KT	100
140	2,5	TRX-42KT	100	200	2,6	4621130	TRZ-43KT	100
200	2,5	TRX-43KT	100	140	3,6	4621140	TRZ-44KT	100
140	3,6	TRX-49KT	100	290	3,6	4621150	TRZ-45KT	100
200	3,6	TRX-51KT	100	160	4,5	4621160	TRZ-46KT	100
300	3,6	TRX-52KT	100	178	4,8	4621170	TRZ-47KT	100
370	3,6	TRX-53KT	100	200	4,8	4621180	TRZ-48KT	100
160	4,8	TRX-55KT	100	250	4,8	4621190	TRZ-49KT	100
188	4,8	TRX-56KT	100	290	4,8	4621200	TRZ-50KT	100
200	4,8	TRX-57KT	100	360	4,8	4621210	TRZ-51KT	100
250	4,8	TRX-58KT	100	120	7,8	4621220	TRZ-52KT	100
300	4,8	TRX-59KT	100	180	7,8	4621230	TRZ-53KT	100
370	4,8	TRX-60KT	100	240	7,8	4621240	TRZ-54KT	100
430	4,8	TRX-61KT	100	300	7,8	4621250	TRZ-55KT	100
530	4,8	TRX-62KT	100	365	7,8	4621260	TRZ-56KT	100
				450	7,8	4621270	TRZ-57KT	100
				540	7,8	4621280	TRZ-58KT	100
				750	7,8	4621290	TRZ-59KT	100

VARIOUS ACCESSORIES

Cables, insulating tubes

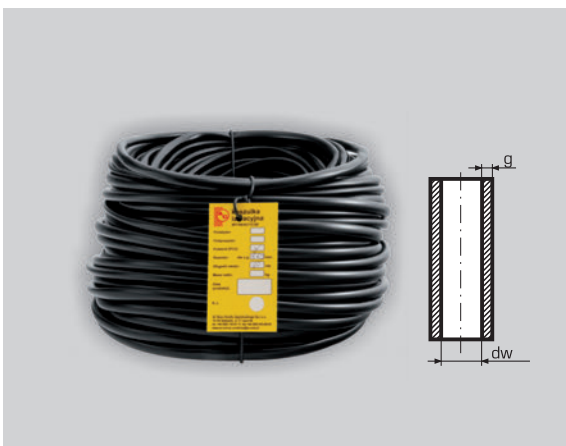
Cables



Cable sect. [mm ²]	Order No.
1,0	TFX-73KX
1,5	TFX-75KX
2,5	TFX-77KX

PPG 100m,
Available in wide range of colours.

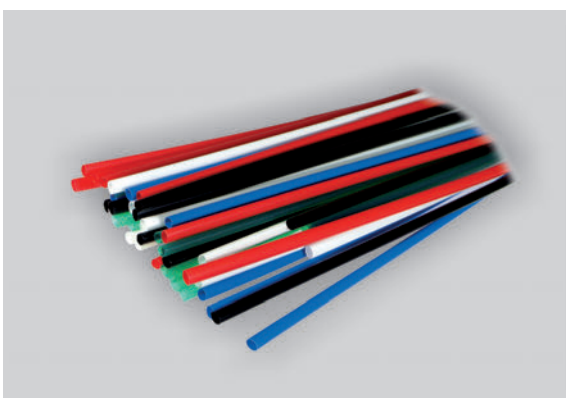
Insulating tubes PCV



Diameter dw [mm]	Wall thickness [mm]	Order No.	Length
4,0	0,5	WTJ-04JK	50m
5,0	0,5	WTJ-05JK	50m
6,0	0,5	WTJ-06JK	50m
8,0	0,5	WTJ-08JK	50m
10,0	0,5	WTJ-10JK	50m
12,0	0,5	WTJ-12JK	50m

We provide insulating tubes up to 20 mm in diameter by request.

Heat shrink tubes



Dimensions	Order No.	
	black	colour
2.4/1.2x1	TPT02CAT	TPT02KAT
3.2/1.6x1	TPT03CAT	TPT03KAT
4.8/2.4x1	TPT05CAT	TPT05KAT
6.4/3.2x1	TPT06CAT	TPT06KAT
8/2x1	TPT08CAT	TPT08KAT
9.5/4.8x1	TPT09CAT	TPT08KAT
12.7/6.4	TPT13CAT	TPT13KAT

VARIOUS ACCESSORIES

Insulated tapes

PCV



S mm	A mm	Length mm	Colour	Order No.	PCs
0,15	15	10	black	TGX-90ET	10
0,15	15	10	red	TGX-91ET	10
0,15	19	25	black	TGX-94ET	10

Material: polyvinyl chloride PVC
Resistance to: atmospheric agents, oils, grease, salt, caustics, thin acids

Pet-cloth

S mm	A mm	Length mm	Colour	Order No.	PCs
0,3	9	25	black	TGX-95AB	1
0,3	19	25	black	TGX-96AB	1

Crimping tools MTA

For not insulated terminals



Order No.
TGY-O1AR

For not insulated terminals
- professional type



Order No.
TGY-O3AR

VARIOUS ACCESSORIES

Crimping tools MTA

For not insulated
terminals
- professional type
with clamp



Order No.

TGY-07AR

For insulated
terminals



Order No.

TGY-02AR

For insulated
terminals
- professional type



Order No.

TGY-04AR

For insulated
terminals
- professional type
with clamp

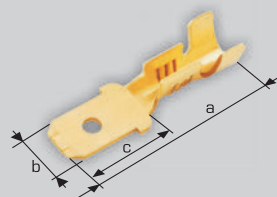




Order No.

TGY-08AR

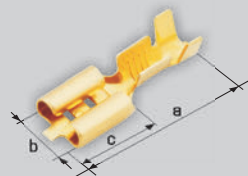
TERMINALS



Type A



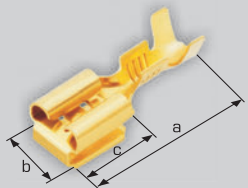
Symbol	Cable sect. (mm ²)	Dimensions			Order No.			
		a (mm)	b (mm)	c (mm)		PCs		PCs
A(2,8)-1	0,3 - 1	13,2	2,8	5,8	TKA-10KB	100	TKA-10XW	5000
A(4,7)-1	0,3 - 1	18,2	4,75	6,6	TKA-20KB	100	TKA-20XW	5000
A-2,5	1 - 2,5	19,8	6,35	8,2	TKA-41KB	100	TKA-41XW	5000



Type F



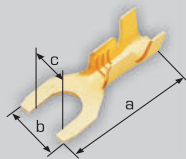
Symbol	Cable sect. (mm ²)	Dimensions			Order No.			
		a (mm)	b (mm)	c (mm)		PCs		PCs
F(2,8)-1	0,3 - 1	14	2,8	6,5	TKF-10KB	100	TKF-10XW	5000
F(4,7)-1	0,3 - 1	15,2	4,7	6,4	TKF-20KB	100	TKF-20XW	5000
F-1	0,5 - 1,5	19,3	6,3	7,7	TKF-40KB	100	TKF-40XW	5000
F-2,5	1 - 2,5	19,3	6,3	7,7	TKF-41KB	100	TKF-41XW	5000
F-6	2,5 - 6	19	6,3	7,7	TKF-42KE	100	TKF-42XW	5000
F(9,5)-6	2,5 - 6	26,9	9,5	11,9	TKF-62JE	50	TKF-62XW	5000



Type I



Symbol	Cable sect. (mm ²)	Dimensions			Order No.			
		a (mm)	b (mm)	c (mm)		PCs		PCs
I - 2,5	1 - 2,5	30,5	7,6	7,9	TKI-41KE	100	TKI-41XW	5000

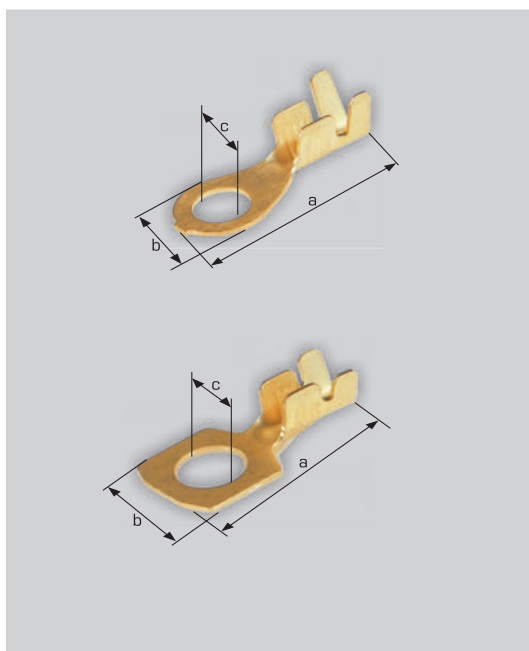
**Fork terminals
M-W**





Symbol	Cable sect. (mm ²)	Dimensions			Order No.			
		a (mm)	b (mm)	c (mm)		PCs		PCs
M4-W-2,5	0,8 - 2,5	17,7	7,9	4,2	TKW-21KB	100	TKW-21TW	2000
M5-W-2,5	0,8 - 2,5	17,7	7,9	5,2	TKW-31KB	100	TKW-31TW	2000

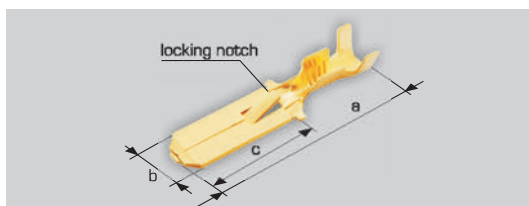
TERMINALS



Ring terminals M-O



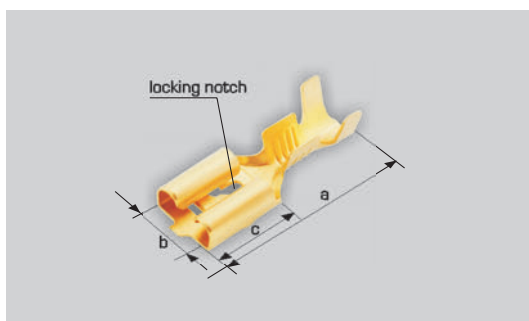
Symbol	Cable sect. (mm ²)	Dimensions			Order No.			
		a (mm)	b (mm)	c (mm)		PCs		PCs
M3-O-1.5	0,5 - 1,5	17	7	3,2	TKM-01KB	100	TKM-01TW	2000
M4-O-1.5	0,5 - 1,5	17	7	4,2	TKM-20KB	100	TKM-20XW	5000
M4-O-2.5	1 - 2,5	20	8,7	4,2	TKM-21KB	100	TKM-21XW	5000
M5-O-1.5	0,5 - 1,5	20	8,7	5,2	TKM-30KB	100	TKM-30XW	5000
M5-O-2.5	1 - 2,5	20	8,7	5,2	TKM-31KB	100	TKM-31XW	5000
M5-O-4	2 - 4	20	8,7	5,2	TKM-32KB	100	-	-
M6-O-2.5	1 - 2,5	20	10	6,2	TKM-41KB	100	TKM-41XW	5000
M6-O-6	4 - 6	28	11	6,2	TKM-42JE	50	TKM-42XW	5000
M6-O-10Sn	8 - 10	32	14	6,2	TKMS49KT	100	-	-
M8-O-2.5	0,8 - 2,5	25,4	13,8	8,2	TKM-51KB	100	TKM-51QW	2500
M8-O-6	3 - 6	31,4	14	8,2	TKM-52JE	50	TKM-52QW	2500
M8-O-10Sn	8 - 10	32	14	8,2	TKMS59KT	100	-	-
M10-O-1.5	0,5 - 1,5	26	14	10,2	TKM-60KB	100	TKM-60XW	5000
M10-O-6	3 - 6	32,4	16	10,5	TKM-62JE	50	TKM-62QW	2500



Type E



Symbol	Cable sect. (mm ²)	Dimensions			Order No.			
		a (mm)	b (mm)	c (mm)		PCs		PCs
E-1	0,5 - 1,5	28	6,35	15,8	TKE-40KB	100	TKE-40XW	5000
E-2,5	1 - 2,5	28	6,35	15,8	TKE-41KB	100	TKE-41XW	5000

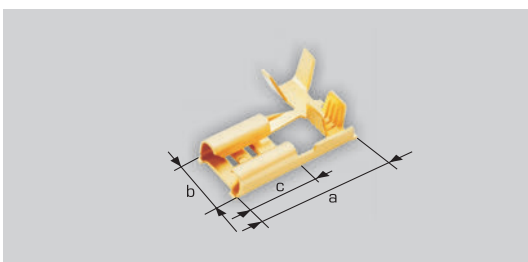
Type J





Symbol	Cable sect. (mm ²)	Dimensions			Order No.			
		a (mm)	b (mm)	c (mm)		PCs		PCs
J(2.8)-1Sn	0,5 - 1	15	2,8	6,3	TKJS10MT	200	-	-
J(4.7)-1Sn	0,5 - 1	15	4,7	6,3	TKJS20KT	100	-	-
J(9.5)-4Sn	2 - 4	26,9	9,5	11,9	TKJS62KT	100	-	-
J-1	0,5 - 1	19,3	6,3	7,7	TKJ-40KB	100	TKJ-40XW	5000
J-2,5	1 - 2,5	19,3	6,3	7,7	TKJ-41KB	100	TKJ-41XW	5000
J-6	2,5 - 6	19	6,3	7,7	TKJ-42KB	100	-	-

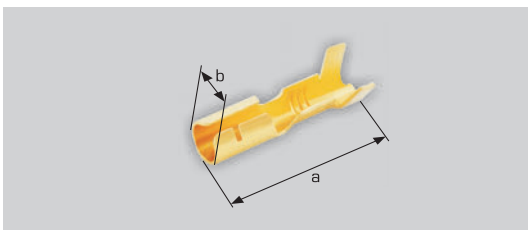
TERMINALS


Type *H*



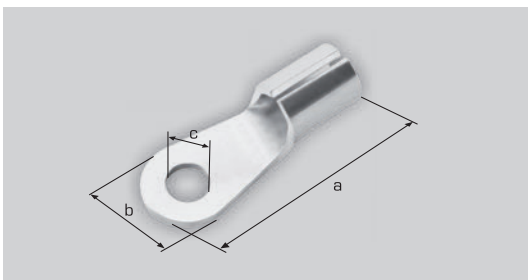
Symbol	Cable sect. (mm ²)	Dimensions			Order No.			
		a (mm)	b (mm)	c (mm)		PCs		PCs
H-2,5	1 - 2,5	14,2	6,3	7,6	TKH-41KB	100	KH-41WW	4000
P-2,5	1 - 2,5	15,2	7,7	8,6	TKH-51KB	100	-	-

Type *N*



Symbol	Cable sect. (mm ²)	Dimensions			Order No.		
		a (mm)	b (mm)		PCs		PCs
N-2,5	0,8 - 2,5	17,4	3,6	TKN-21KB	100	TKN-21XW	5000

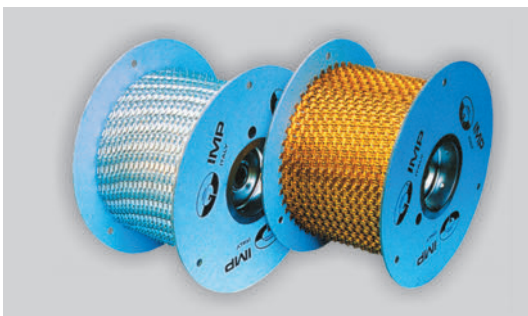
Tubular
terminal *B311*



Symbol	Cable sect. (mm ²)	Dimensions			Order No.	PCs
		a (mm)	b (mm)	c (mm)		
B311-10/6,5	10	35	14	6,5	TKK-44JB	50
B311-35/8,5	35	37	18	8,5	TKK-57JB	50
B311-50/10,5	50	43	22	10,5	TKK-68HB	25

Terminals on reel

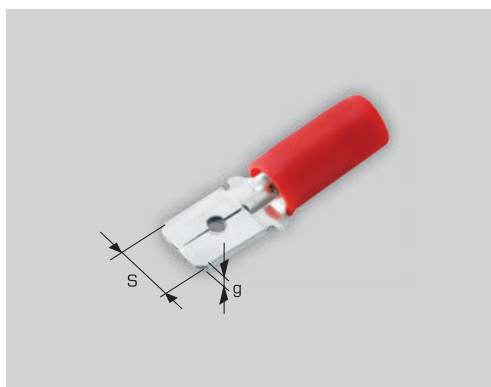
AC offers also
terminals on reel
for the following
types:
A, E, F, H, J, M-O, M-W





for tin plated terminals on 3rd place of Order No. is "s" for terminals on reel on 7th place of Order No. is "X"

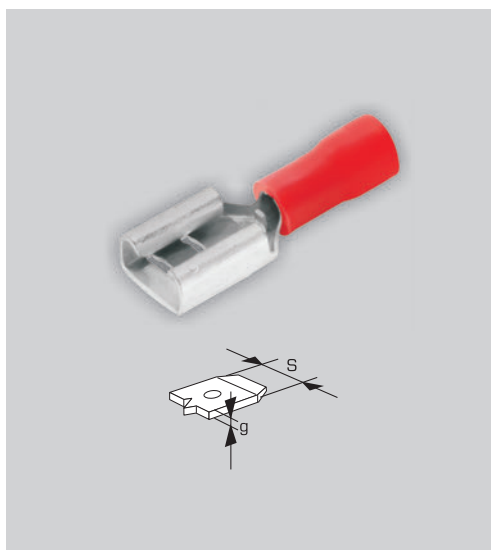
INSULATED TERMINALS



Type A



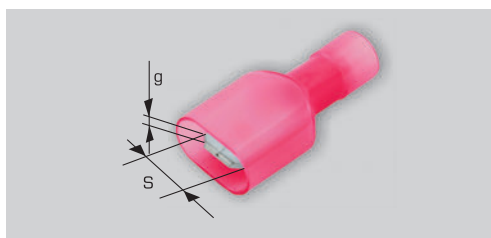
Symbol	Cable sect. (mm ²)	Insulation colour	Dimensions			Order No.		
			S (mm)	g (mm)		PCs		PCs
A(2.8)-1-P	0,25-1	red	2,8	0,8	TKA-13KD	100	TKA-13SW	1000
A(4.7)-1-P	0,25-1	red	4,7	0,5	TKA-23KD	100	TKA-23SW	1000
A-1-P	0,25-1	red	6,3	0,8	TKA-43KT	100	TKA-43WW	4000
A(4.7)-2.5-P	1-2,5	blue	4,7	0,5	TKA-24KN	100	TKA-24SW	1000
A-2.5-P	1-2,5	blue	6,3	0,8	TKA-44KT	100	TKA-44WW	4000
A-6-P	2,5-6	yellow	6,3	0,8	TKA-45JE	50	TKA-45RW	500



Type F



Symbol	Cable sect. (mm ²)	Insulation colour	Dimensions			Order No.		
			S (mm)	g (mm)		PCs		PCs
F(2.8)-1-P	0,25-1	red	2,8	0,8	TKF-13KD	100	TKF-13SW	1000
F(4.7)-1-P	0,25-1	red	4,7	0,5	TKF-23KD	100	TKF-23SW	1000
F-1-P	0,25-1	red	6,3	0,8	TKF-43KT	100	TKF-43WW	4000
F(2.8)-2.5-P	1-2,5	blue	2,8	0,5	TKF-14KT	100	-	-
F(4.7)-2.5-P	1-2,5	blue	4,7	0,5	TKF-24KN	100	TKF-24SW	1000
F- 2.5-P	1-2,5	blue	6,3	0,8	TKF-44KT	100	TKF-44WW	4000
F- 6-P	2,5-6	yellow	6,3	0,8	TKF-45JE	50	TKF-45RW	500
F(9.5)-6-P	2,5-6	yellow	9,5	1,1	TKF-65JE	50	TKF-65RW	500

**Type A
full insulated
(PP)**

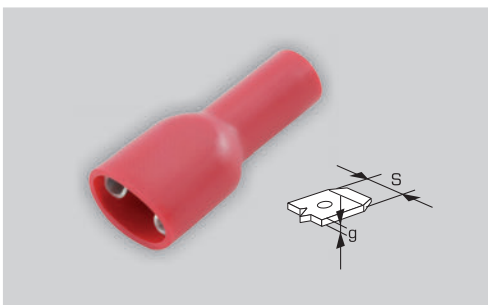




Symbol	Cable sect. (mm ²)	Insulation colour	Dimensions			Order No.		
			S (mm)	g (mm)		PCs		PCs
A-1-PP	0,25-1	różowy	6,3	0,8	TKA-46JE	50	TKA-46SW	1000
A-2,5-PP	1-2,5	blue	6,3	0,8	TKA-47JE	50	TKA-47SW	1000

(MP) - MasterPacking (10 - BOX MASTER)

INSULATED TERMINALS



Type F
full insulated
(PP)



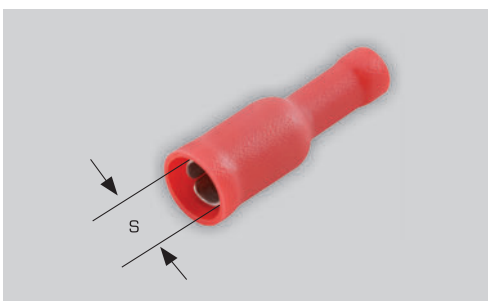
Symbol	Cable sect. (mm ²)	Insulation colour	Dimensions			Order No.		
			S (mm)	g (mm)		PCs		PCs
F(4,7)-1-PP	0,25-1	red	4,7	0,5	TKF-26KN	100	TKF-26SW	1000
F-1-PP	0,25-1	red	6,3	0,8	TKF-46KE	100	TKF-46SW	1000
F(4,7)-2.5-PP	1-2,5	blue	4,7	-	TKF-27KT	100	-	-
F- 2.5-PP	1-2,5	blue	6,3	0,8	TKF-47JN	50	TKF-47SW	1000
F-6-PP	2.5-6	yellow	6,3	0,8	TKF-48JE	50	TKF-48RW	500



Type B



Symbol	Cable sect. (mm ²)	Insulation colour	Dimensions			Order No.		
			S (mm)	g (mm)		PCs		PCs
B4-1-P	0,25-1	red	4	-	TKB-23KD	100	TKB-23SW	1000
B4-2.5-P	1-2,5	blue	4	-	TKB-24KN	100	TKB-24SW	1000
B5-2.5-P	1-2,5	blue	5	-	TKB-34KE	100	TKB-34SW	1000
B5-6-P	2,5-6	yellow	5	-	TKB-35KT	100	-	-



Type G
full insulated



Symbol	Cable sect. (mm ²)	Insulation colour	Dimensions			Order No.		
			S (mm)	g (mm)		PCs		PCs
G4-1-P	0,25-1	red	4	-	TKG-23KE	100	TKG-23SW	1000
G4-2.5-P	1-2,5	blue	4	-	TKG-24KE	100	TKG-24SW	1000
G5-2.5-P	1-2,5	blue	5	-	TKG-34JN	50	TKG-34SW	1000
G5-6-P	2.5-6	yellow	5	-	TKG-35JT	50	-	-

Type S

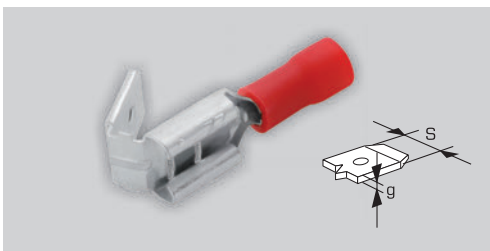





Symbol	Cable sect. (mm ²)	Insulation colour	Dimensions			Order No.		
			S (mm)	g (mm)		PCs		PCs
S-1-P	0,25-1	red	-	-	TKS-13KT	100	TKS-13UW	3000
S-2.5-P	1-2,5	blue	-	-	TKS-14KT	100	TKS-14UW	3000
S-6-P	2.5-6	yellow	-	-	TKS-15KT	100	TKS-15TW	2000

(MP) - MasterPacking (10 - BOX MASTER)

INSULATED TERMINALS




Type I



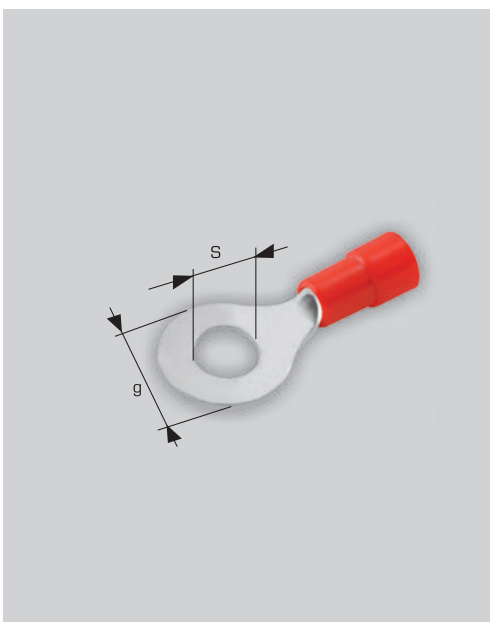
Symbol	Cable sect. (mm ²)	Insulation colour	Dimensions			Order No.		
			S (mm)	g (mm)		 PCs	 PCs	PCs
I-1-P	0,25-1	red	6,3	0,8	TKI-43KE	100	TKI-43SW	1000
I-2,5-P	1-2,5	blue	6,3	0,8	TKI-44KE	100	TKI-44SW	1000




**Type L
full insulated**



Symbol	Cable sect. (mm ²)	Insulation colour	Dimensions			Order No.		
			S (mm)	g (mm)		 PCs	 PCs	PCs
L-1-P	0,25-1	red	-	-	TKL-13KE	100	TKL-13SW	1000
L-2,5-P	1-2,5	blue	-	-	TKL-14KE	100	TKL-14SW	1000
L-6-P	2,5-6	yellow	-	-	TKL-15JN	50	TKL-15RW	500

Type M-O

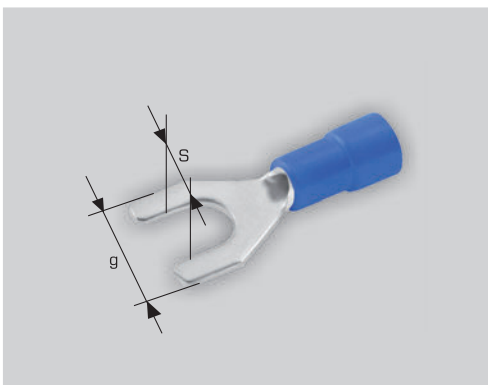



Symbol	Cable sect. (mm ²)	Insulation colour	Dimensions			Order No.		
			S (mm)	g (mm)		 PCs	 PCs	PCs
M4-O-1-P	0,25-1	red	4,3	7	TKM-23KE	100	TKM-23WW	4000
M5-O-1-P	0,25-1	red	8,5	8,5	TKM-33KT	100	TKM-33WW	4000
M6-O-1-P	0,25-1	red	6,4	12,5	TKM-43KT	100	TKM-43WW	4000
M8-O-1-P	0,25-1	red	8,4	12,5	TKM-53KT	100	TKM-53WW	4000
M4-O-2,5-P	1-2,5	blue	4,3	7	TKM-24KT	100	TKM-24WW	4000
M5-O-2,5-P	1-2,5	blue	8,5	8,5	TKM-34KT	100	TKM-34WW	4000
M6-O-2,5-P	1-2,5	blue	6,4	12,5	TKM-44KT	100	TKM-44WW	4000
M8-O-2,5-P	1-2,5	blue	8,4	12,5	TKM-54KT	100	TKM-54WW	4000
M6-O-6-P	2,5-6	yellow	6,4	13,5	TKM-45KT	100	TKM-45UW	2000
M8-O-6-P	2,5-6	yellow	8,4	13,5	TKM-55JT	50	TKM-55TW	2000
M10-O-6-P	2,5-6	yellow	10,5	15	TKM-65JE	50	TKM-65RW	500

(MP) - MasterPacking (10 - BOX MASTER)

INSULATED TERMINALS

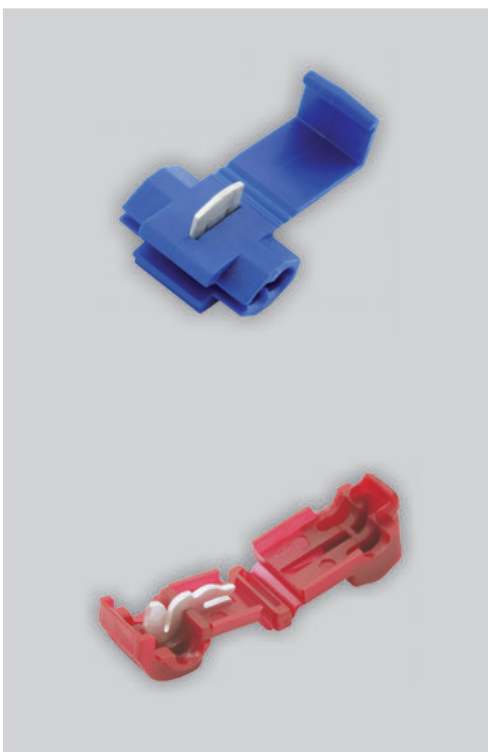
Type *M-W*






Symbol	Cable sect. (mm ²)	Insulation colour	Dimensions		Order No.	
			S (mm)	g (mm)	 TKW-24KT	PCs
M4-W-2.5-P	1-2,5	blue	4,3	6,8	TKW-24KT	100
M5-W-2.5-P	1-2,5	blue	5,3	10	TKW-34KT	100
M6-W-2.5-P	1-2,5	blue	6,4	11	TKW-44KT	100

Cable connectors

X Type



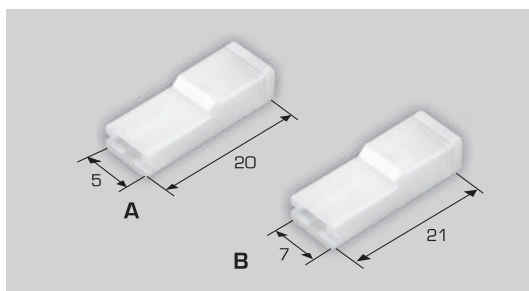
T Type

Symbol	Cable sect. (mm ²)	Insulation colour		Order No.		
				 PCs	 PCs	PCs
CONNECTOR-1	0,25-1	red	TKX-03KB	100	TKX-03YW	10000
CONNECTOR-2,5	1-2,5	blue	TKX-04KB	100	TKX-04YW	10000
CONNECTOR-6	2,5-6	yellow	TKX-05JT	50	TKX-05XW	5000
CONNECTOR-T1	0,25-1	red	-	-	TKX-13SW	1000

(MP) - MasterPacking (10 - BOX MASTER)

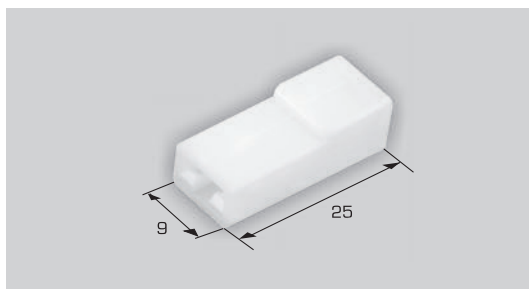
CONNECTORS

Insulating cover
for terminal *F*



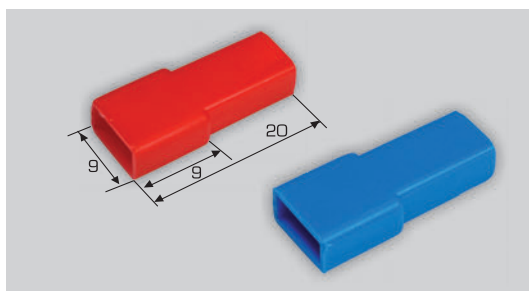
Terminal type	Order No.	PCs
A) F{2,8}-1	TQF-01RBB	500
B) F{4,7}-1	TQF-10RBB	500

Insulating cover
for terminal *F-2,5*



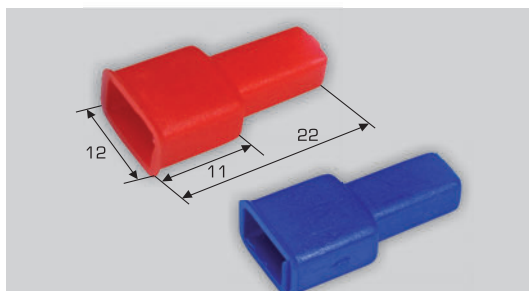
Order No.	PCs
TQF-21RBB	500

Insulating cover
for terminal *F-2,5*



Colour	Order No.	PCs
red	TQF-20KBK	100
blue	TQF-20KBN	100

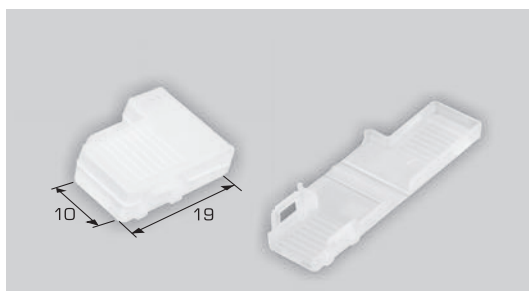
Insulating cover
for terminal *A-2,5*



Colour	Order No.	PCs
red	TQA-20KBK	100
blue	TQA-20KBN	100

CONNECTORS

**Insulating cover
for terminal
*H-2,5***



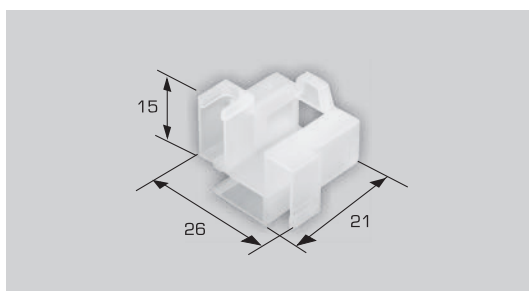
Order No.

PCs

TQH-01KBB

100

**3-way connector
for terminal
*P-4[ON3Z]***



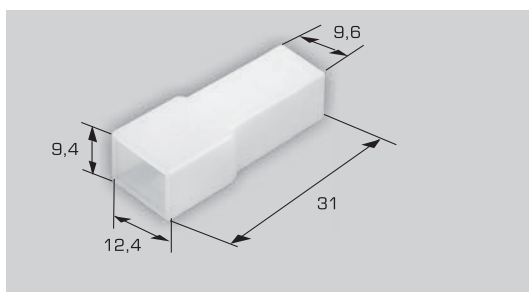
Order No.

PCs

TQH-10GB

20

**1-way connector
for terminal
*E-2,5[OK-1]***



Order No.

PCs

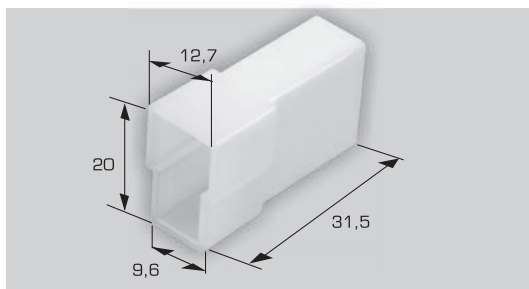
TQK-01GB

20

TQK-01KB

100

**2-way connector
for terminal
*E-2,5[OK-2]***



Order No.

PCs

TQK-02GB

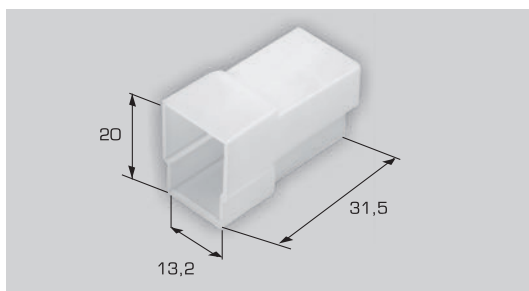
20

TQK-02KB

100

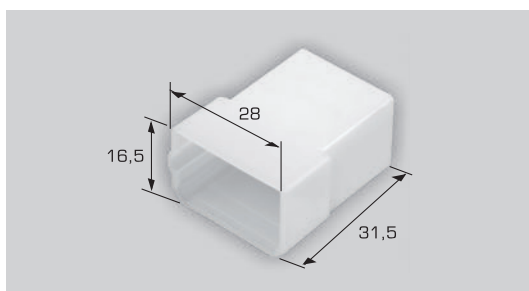
CONNECTORS

**3-way connector
for terminal
E-2,5 [OK-3]**



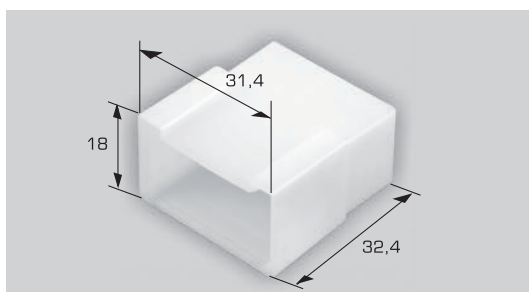
Order No.	PCs
TQK-03GB	20
TQK-03KB	100

**4-way connector
for terminal
E-2,5 [OK-4]**



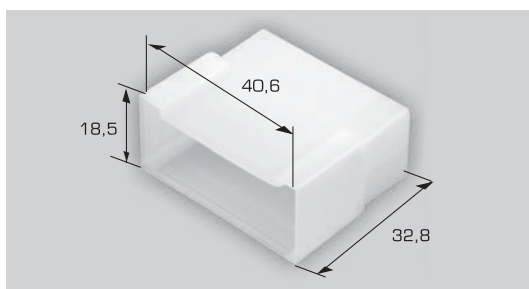
Order No.	PCs
TQK-04GB	20
TQK-04KB	100

**6-way connector
for terminal
E-2,5 [OK-6]**



Order No.	PCs
TQK-06GB	20
TQK-06KB	100

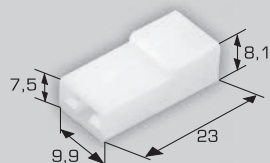
**8-way connector
for terminal
E-2,5 [OK-8]**



Order No.	PCs
TQK-08GB	20
TQK-08KB	100

CONNECTORS

**1-way connector
for terminal
J-2,5 [ON-1]**



Order No.

PCs

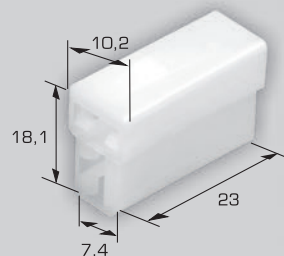
TQN-01GB

20

TQN-01KB

100

**2-way connector
for terminal
J-2,5 [ON-2]**



Order No.

PCs

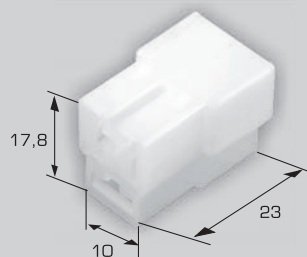
TQN-02GB

20

TQN-02KB

100

**3-way connector
for terminal
J-2,5 [ON-3]**



Order No.

PCs

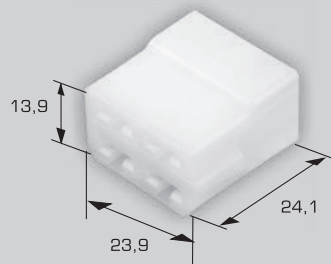
TQN-03GB

20

TQN-03KB

100

**4-way connector
for terminal
J-2,5 [ON-4]**



Order No.

PCs

TQN-04GB

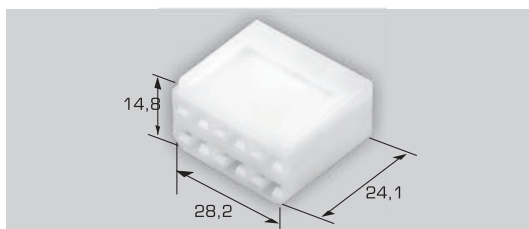
20

TQN-04KB

100

CONNECTORS

**6-way connector
for terminal
J-2,5 [ON-6]**



Order No.

PCs

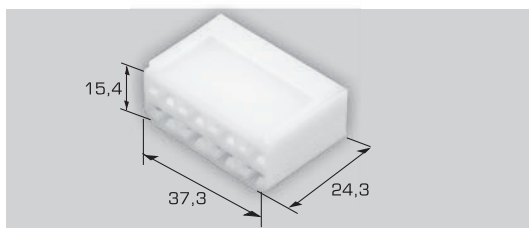
TQN-06GB

20

TQN-06KB

100

**8-way connector
for terminal
J-2,5 [ON-8]**



Order No.

PCs

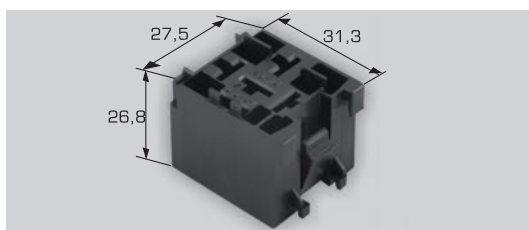
TQN-08GB

20

TQN-08KB

100

**5-way mini
relay
housing**



Order No.

PCs

WQN-05GB

20

**9-way mini
relay
housing
(5x6,3+4x2,8)**



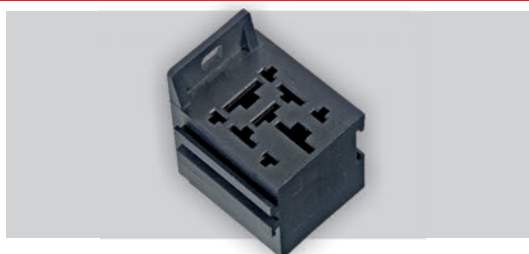
Order No.

PCs

TQN-19EB

10

**9-way mini
relay
housing
(2x9,5+3x6,
3+4x2,8)**



Order No.

PCs

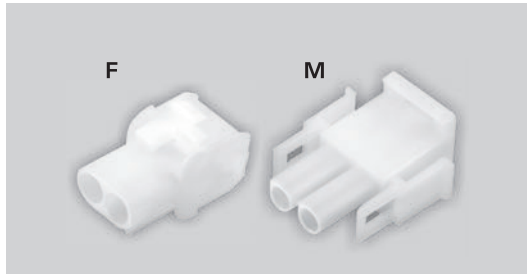
TQN-29EB

10

CONNECTORS

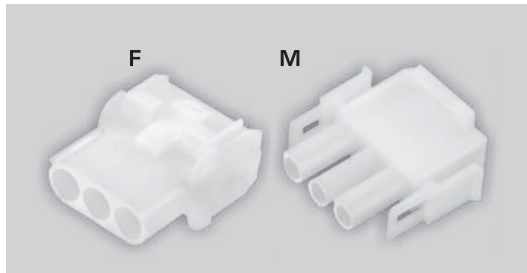
MATE-N-LOCK connectors

**2-way
MATE-N-LOCK
connector**



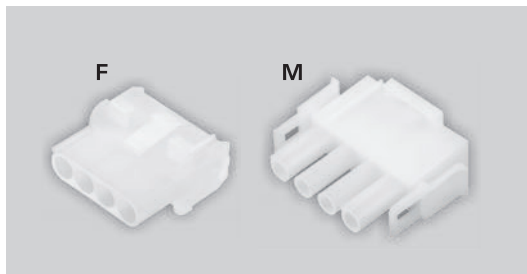
Type	Order No.	PCs
F	TYN03BJB	50
M	TYN04BJB	50

**3-way
MATE-N-LOCK
connector**



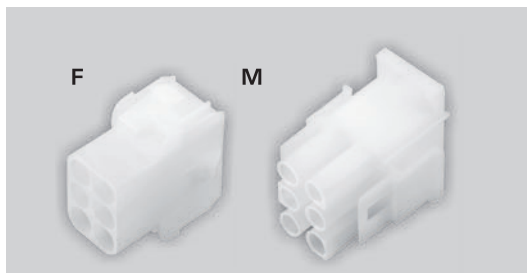
Type	Order No.	PCs
F	TYN05BJB	50
M	TYN06BJB	50

**4-way
MATE-N-LOCK
connector**



Type	Order No.	PCs
F	TYN07BJB	50
M	TYN08BJB	50

**6-way
MATE-N-LOCK
connector**

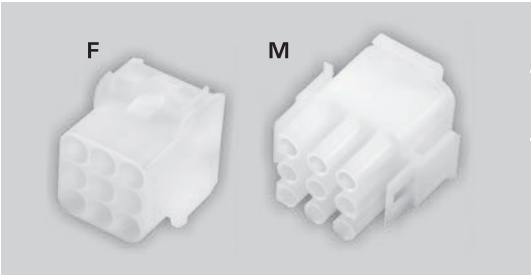


Type	Order No.	PCs
F	TYN09BJB	50
M	TYN10BJB	50

CONNECTORS

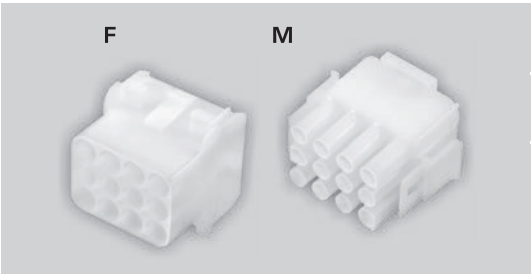
MATE-N-LOCK connectors

**9-way
MATE-N-LOCK
connector**



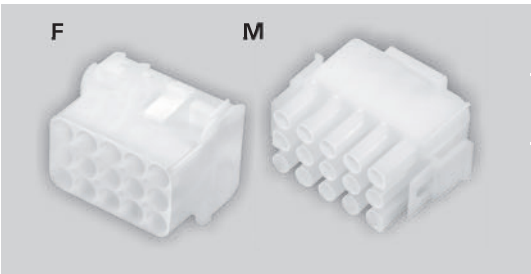
Type	Order No.	PCs
F	TYN11BJB	50
M	TYN12BJB	50

**12-way
MATE-N-LOCK
connector**



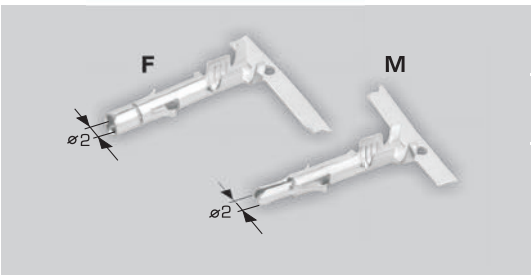
Type	Order No.	PCs
F	TYN13BJB	50
M	TYN14BJB	50

**15-way
MATE-N-LOCK
connector**



Type	Order No.	PCs
F	TYN15BJB	50
M	TYN16BJB	50

**MATE-N-LOCK
terminals**

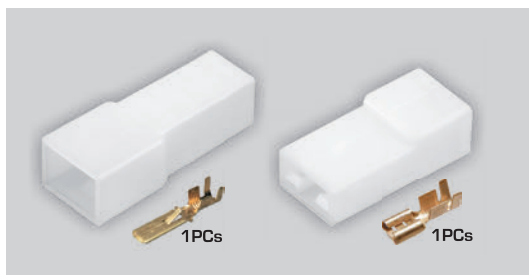


Type	Order No.	PCs
F	TWK028KB	100
M	TWK029KB	100

CONNECTORS

Connector sets with terminals

1-way
connector
set *E+J*



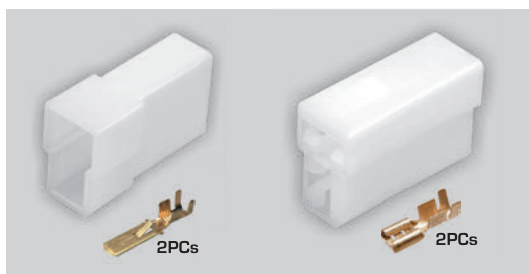
Order No.

PCs

TGZ-01AB

1

2-way
connector
set *E+J*



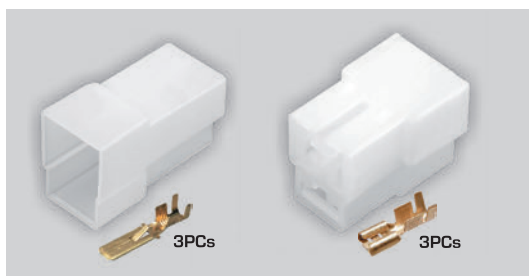
Order No.

PCs

TGZ-02AB

1

3-way
connector
set *E+J*



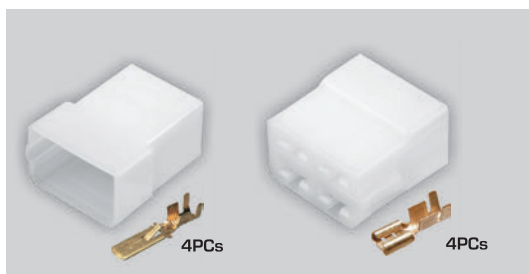
Order No.

PCs

TGZ-03AB

1

4-way
connector
set *E+J*



Order No.

PCs

TGZ-04AB

1

CONNECTORS

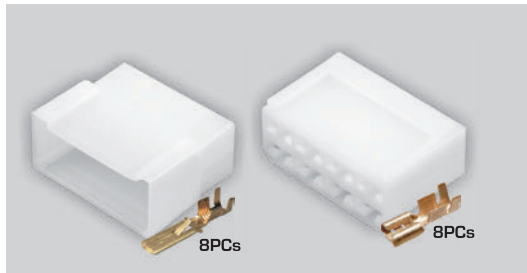
Connector sets with terminals

6-way
connector
set *E+J*



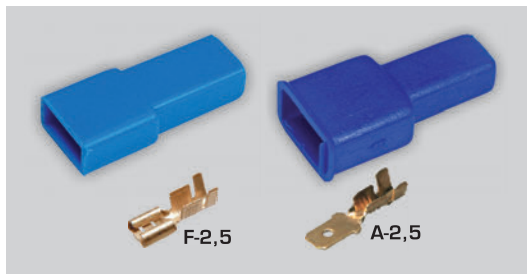
Order No.	PCs
TQZ-06AB	1

8-way
connector
set *E+J*



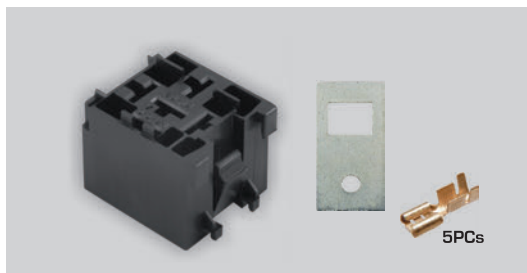
Order No.	PCs
TQZ-08AB	1

Connector
set *A+F*



	Order No.	PCs
with terminals	TKZ-01DB	5
without terminals	TKZ-04MB	200

5-way mini relay
housing set
with *J-2,5*
terminals



Order No.	PCs
WQZ-05AB	1

CONNECTORS

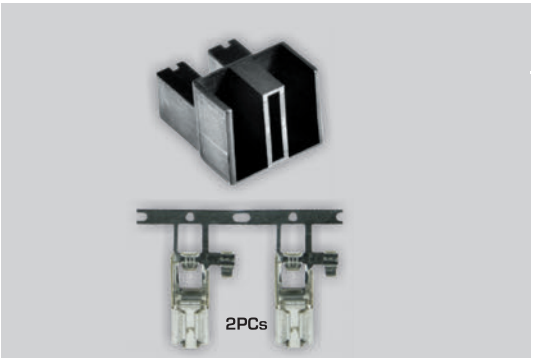
Connector sets with terminals

3-way connector
set [ON3Z]
with *P4*
terminals



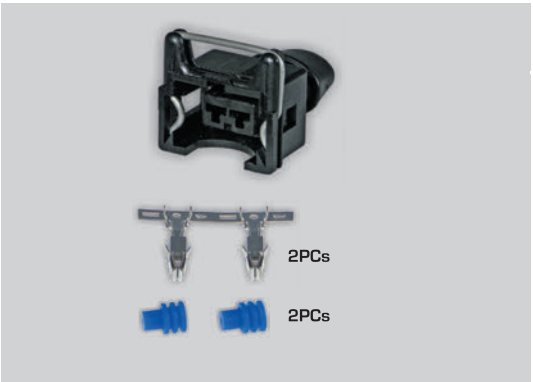
Order No.	PCs
TQZ-13AB	1

2-way connector
set for *H-7*



Order No.	PCs
TQZ-22AB	1

2-way connector
set for injector

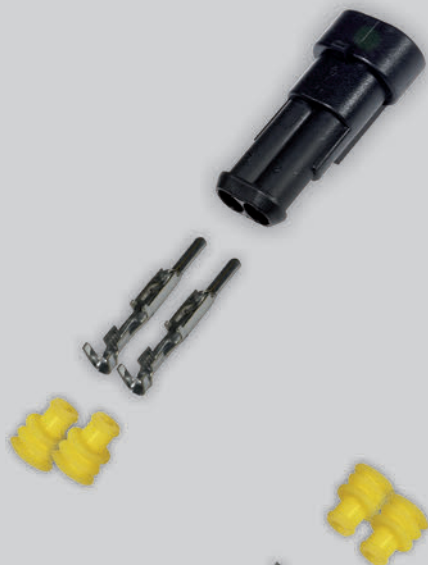


Order No.	PCs
TQZ-62AB	1

CONNECTORS

Superseal connector sets

Superseal
-1,5mm



Superseal
-2,8mm



Connector type	Connector model	Order No.	PCs
1-way	Superseal-1,5mm	TQZ-31AB	1
2-way	Superseal-1,5mm	TQZ-32AB	1
3-way	Superseal-1,5mm	TQZ-33AB	1
4-way	Superseal-1,5mm	TQZ-34AB	1
5-way	Superseal-1,5mm	TQZ-35AB	1
6-way	Superseal-1,5mm	TQZ-36AB	1
Connector type	Connector model	Order No.	PCs
2-way	Superseal-2,8mm	TQZ-42AB	1

**Overvoltage
limiter
OE-31**



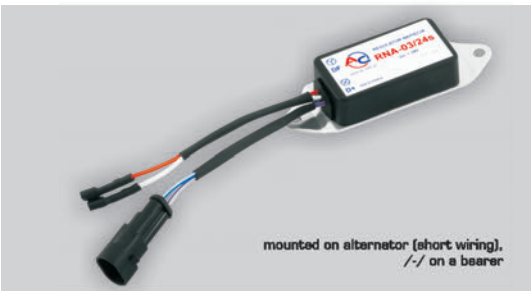
U	Order No.
24V	WEA-10AA
	Vehicles equipped with alternator G 1000M, e.g.: AUTOSAN H9, H10, JELCZ Pr110

**Voltage regulator
REO-28
REO-28W
(hermetic)**



U	Order No.	
24V	REO-28	WEA-20AA
	REO-28W	WEA-25AA
Vehicle type: vehicles equipped with alternators: G 1000M, A 220 M, A 24 M e.g.: AUTOSAN H9, H10, JELCZ PR110, STAR 200, 742, 1142 with +/- on ground (operation possibility with overvoltage limiter OE-31)		

**Voltage
regulator
RNA-03/24s**



U	Order No.
24V	WEA-31AA
	STAR 742, 1142

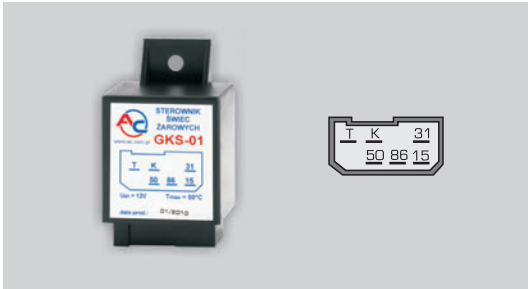
**Voltage
regulator
RNA-03/24**



U	Order No.
24V	WEA-32AA
	STAR 742, 1142

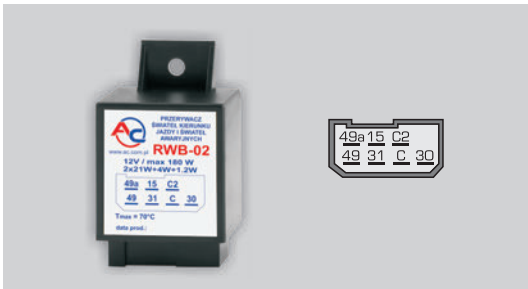
CAR ELECTRONIC

**Glow plug
heating timer
GKS-01**



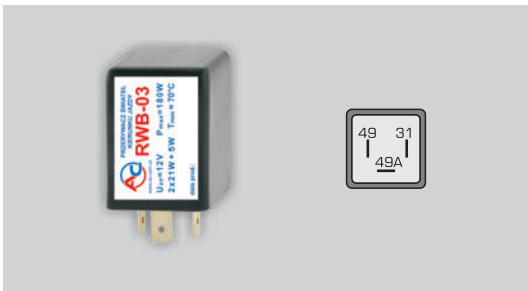
U	Order No.
12V	WER-10AB
Vehicles equipped with diesel engine with glow plugs, e.g. ŻUK, LUBLIN (engine 4C/90 from Andoria)	

**Flasher unit
RWB-02**



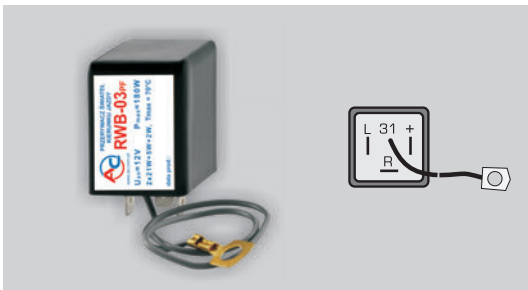
U	Order No.
12V	WER-20AG
Polonez, Fiat: 125R, 132, Żuk, Nysa	

**Flasher unit
RWB-03**



U	Order No.
12V	WER-30AA
Audi: A6, A8, V8, 80, 90, 100, 200, BMW: 3, 5, 6, Citroen: AX, XANTIA, XM, ZX, Daewoo: LANOS, LEGANZA, NEXIA, NUBIRA, MATIZ, Fiat: PUNTO, UNO, TEMPRA, TIPO, Ford: ESCORT, FIESTA, MONDEO, SCORPIO, SIERRA, Lada: 2107, SAMARA, Lancia THEMA, Nissan: MAXIMA, PRIMERA, Opel: ASTRA, CORSA, OMEGA, KADETT, Saab 900, VW GOLF, PASSAT	

**Flasher unit
RWB-03PF**



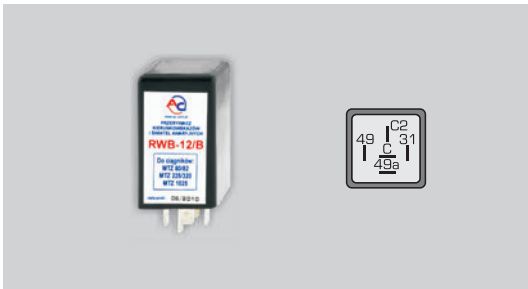
U	Order No.
12V	WER-33AB
FSM 126P, BIS	

Flasher unit RWB-05 LED



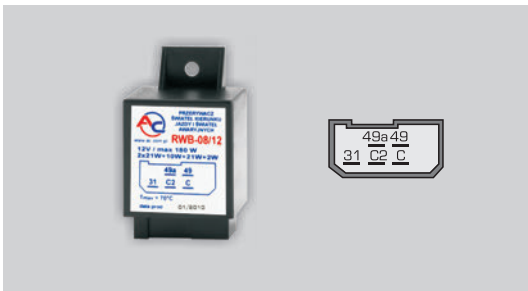
U	Order No.
12V	WER-51AA
Tractors with 12V-electrical system and -/- on ground, e.g.: URSUS , M.-FERGUSON, PRONAR - FARMER	


Flasher unit RWB-12/B



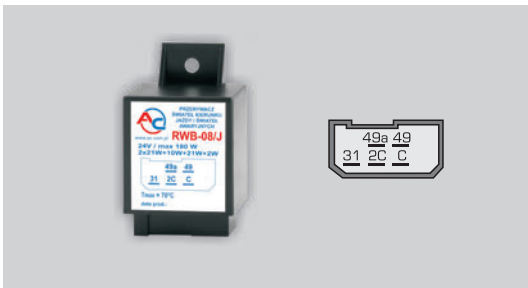
U	Order No.
12V	WER-88AAW
Tractors with 12V-electrical system PRONAR: MTZ 225/320, MTZ 1025	

Flasher unit RWB-08/12



U	Order No.
12V	 WER-80AG
Star: 28, 29, 38, Kombajn BIZON z instalacją 12V	

Flasher unit RWB-08/J



U	Order No.
24V	WER-86AA
Jelcz C422, C424	

**Flasher unit
RWB-08S/24**



U

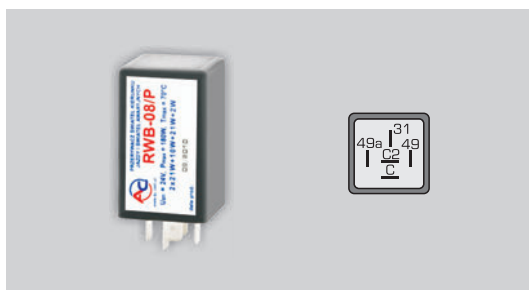
Order No.

24V

WER-83AG

Star: 200, 244, 266, 742, 1142, Jelcz: C422MB, C422/4, W842, C626 Kombajn BIZON RECORD z instalacją 24V

**Flasher unit
RWB-08/P**



U

Order No.

24V

WER-87AA

STAR: 742, 1142, 8.125K, 8.125, 8.125L, 12.155K, 12.155, 12.155L

**Flasher unit
RWB-08A**



U

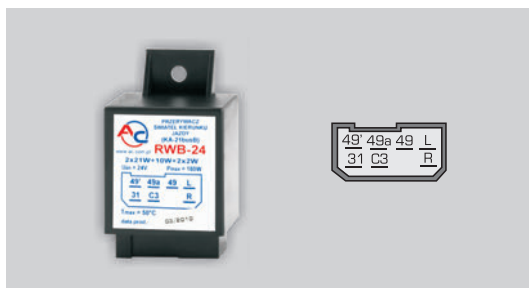
Order No.

24V

WER-84AG

Autosan: A1010M, A1012T, H1011, H1012, H6, Jelcz: M181M, M181MB

**Flasher unit
RWB-24**



U

Order No.

24V

WER-97AA

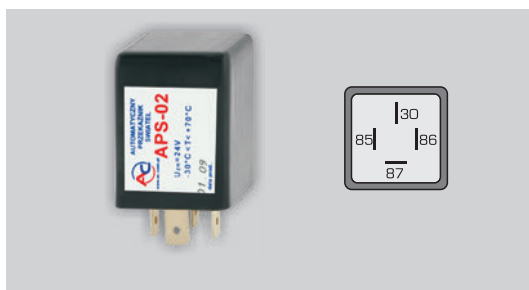
buses AUTOSAN

Time relays
PC-05/24
PC-06/24



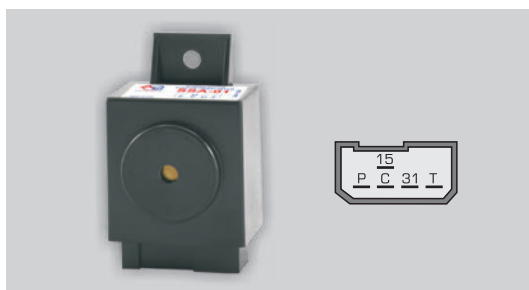
U	Order No.	
24V	PC-05	WET-34AA
24V	PC-06	WET-37AA
buses Autosan		

**Automatic timer
of light**
APS-02/24



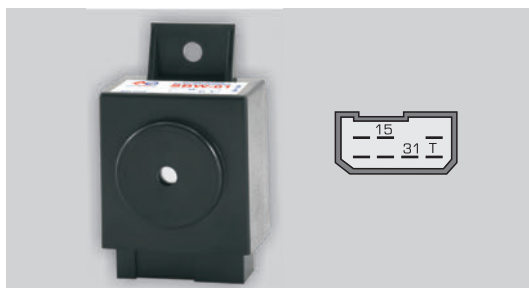
U	Order No.
24V	WET-20AA
	buses Autosan

**Failure warning
device**
SSA-01



U	Order No.
24V	WEX-06AA
	buses Autosan

**Reverse gear
warning device**
SBW-01



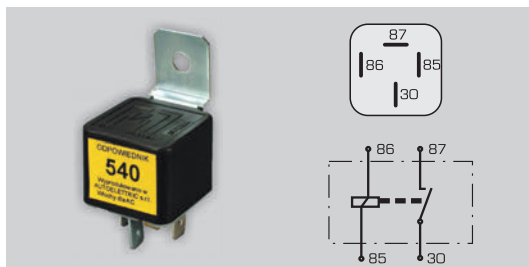
U	Order No.
24V	WEX-08AA
	buses Autosan

CAR ELECTRONICS

Relays

Relay 540 (normally open)

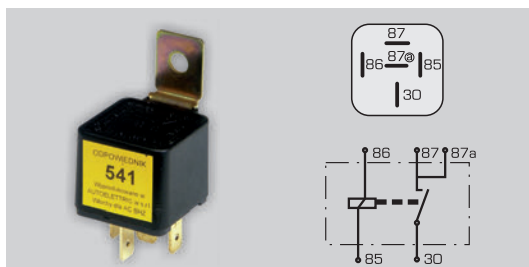
$U_{zn}=12V$
 $I_{zn}=30A$



U	Order No.	PCs
12V	TFP-05GB	20
12V	TFP-05RW	500 *

Relay 541 (normally open)

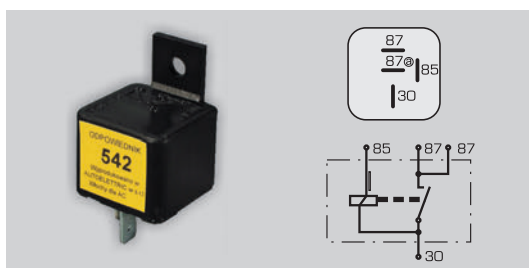
$U_{zn}=12V$
 $I_{zn}=30A$



U	Order No.	PCs
12V	TFP-03GB	20
12V	TFP-03RW	500 *

Relay 542 (normally open)

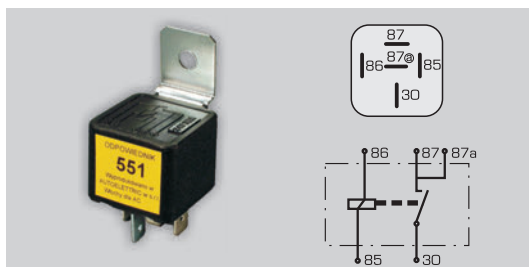
$U_{zn}=12V$
 $I_{zn}=30A$



U	Order No.	PCs
12V	TFP-12GB	20
12V	TFP-12RW	500 *

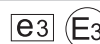
Relay 551 (normally open)

$U_{zn}=24V$
 $I_{zn}=20A$



U	Order No.	PCs
24V	TFP-23GB	20
24V	TFP-23RW	500 *

HOMOLOGATION ACCORDING TO:

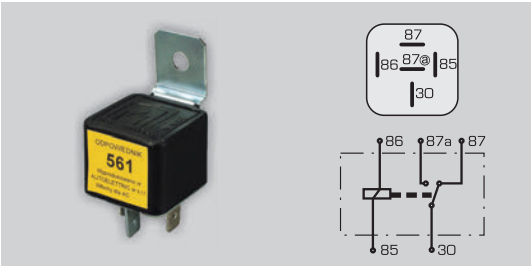


NORMATIVA EUROPEA DIR 95/54 CE
REGOLAMENTO N. 10 ECE-ONU/2

* without bracket

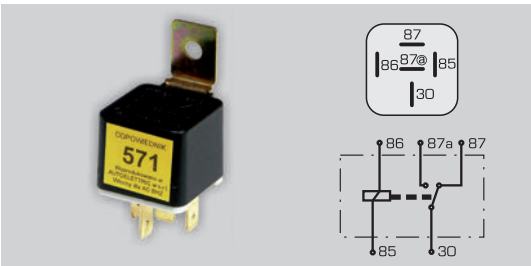
Relays

Relay 561
(change over)
 $U_{zn}=12V$
 $I_{zn}=20/30A$



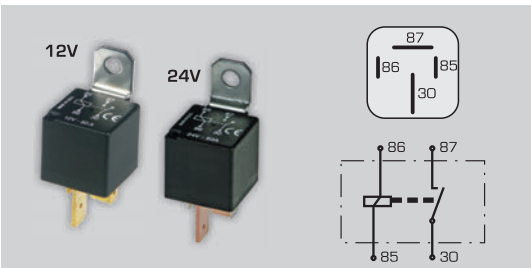
U	Order No.	PCs
12V	TFP-33GB	20
12V	TFP-33RW	500 *

Relay 571
(change over)
 $U_{zn}=24V$
 $I_{zn}=10/20A$



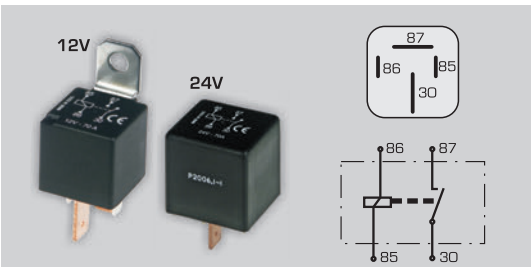
U	Order No.	PCs
24V	TFP-43GB	20
24V	TFP-43RW	500 *

Power relay 50A
(normally open)
 $U_{zn}=12V$, $I_{zn}=50A$
 $U_{zn}=24V$, $I_{zn}=50A$



U	Order No.	PCs
12V	TFP-44KT	1
24V	TFP-46KT	1

Power relay 70A
(normally open)
 $U_{zn}=12V$, $I_{zn}=70A$
 $U_{zn}=24V$, $I_{zn}=70A$



U	Order No.	PCs
12V	TFP-45KT	1
24V	TFP-47KT	1

HOMOLOGATION ACCORDING TO:



NORMATIVA EUROPEA DIR 95/54 CE
REGOLAMENTO N. 10 ECE-ONU/2

* without bracket

Battery switches

080990.00



U	Order No.
max. 24V	TFX-50AT

080983.00



U	Order No.
max. 24V	TFX-40AT

080995.00



U	Order No.
max. 24V	TFX-47AT

Battery switches

080989.00



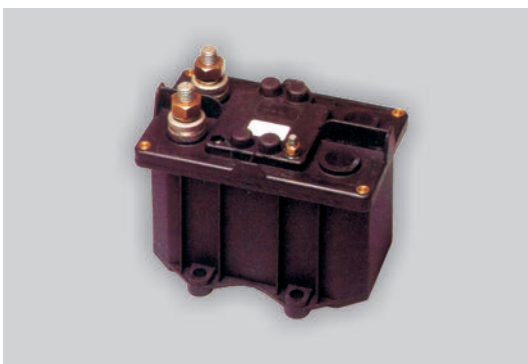
U

Order No.

24V

TFX-49AT

080944.00



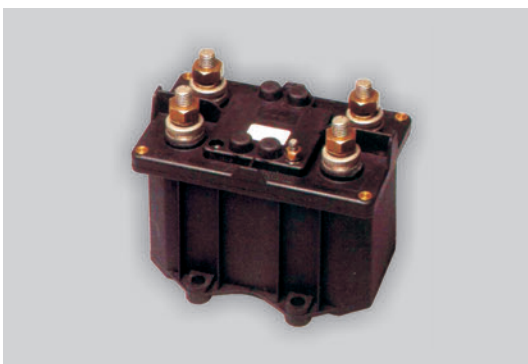
U

Order No.

24V

TFX-48AT

080966.00



U

Order No.

24V

TFX-43AT

Battery cables



Cable sect. (mm ²)	Length (m)	Symbol	Order No.
50	0,50	P-AK/0.50 [-,0]	WFY-10AA
50	0,82	P-AK/0.82 [-,0]	WFY-11AA
50	0,94	P-AK/0.94 [+ ,0]	WFY-13AA
50	1,10	P-AK/1.10 [0,0]	WFY-15AA
50	1,27	P-AK/1.27 [+ ,0]	WFY-17AA
50	1,52	P-AK/1.52 [+ ,0]	WFY-19AA
50	2,24	P-AK/2.24 [+ ,0]	WFY-21AA
On the base of received drawings and technical documentation we are able to produce specific battery cables.			

Battery cables (bridge)



Cable sect. (mm ²)	Length (m)	Symbol	Order No.
50	0,25	P-AK/0.25 [+ , -]	WFY-07AA
50	0,42	P-AK/0.42 [+ , -]	WFY-09AA

Ground leads



Band width S (mm)	Holes diameter d (mm)	Length L (mm)	Order No.
17	10,5	136	WFY-89AA
17	10,5	215	WFY-90AA
17	8,5	315	WFY-91AA
17	8,5	325	WFY-92AA
17	8,5	395	WFY-94AA
17	8,5	195	WFY-95AA

Charging clips



Order No.	Load current	PCs
TFX-24EB	40A	10
TFX-25CC	100A	4
TFX-27CC	200A	4
TFX-28CC	500A	4

Booster cables



Order No.	Max. load current	Length (m)
WFX-11AC	300A	2,5
WFX-12AC	500A	3,5
WFX-13AC	800A	4,0
WFX-14AC	500A	6,0
WFX-15AC	800A	6,0

**Set of 1200A
Booster Cables**



Order No.	Max. load current	Length (m)
WFX-16AC	1200A	6,0
WFX-17AC	1200A	8,0

Rectifying diodes

D104-20
D104-35
(no lead)



Symbol	Limiting current [A]	Order No.	PCs
D104-20	20	TFD-01KT	100
D104-35	35	TFD-50KT	100

D204-20X
D204-35X
(pin lead)



Symbol	Limiting current [A]	Order No.	PCs
D204-20X	20	TFD-30JT	50
D204-35X	35	TFD-65JT	50

D204-20
D204-20X
(cable lead)



Symbol	Limiting current [A]	Order No.	PCs
D204-20	20	TFD-10KT	100
D204-20X	35	TFD-20KT	100

„X” - in diode type means reverse polarization

Diodes Dxxx-20, -20X: limiting current: **20A** repeated inverse voltage: **300V** peak forward voltage: **1,4V** operation temperature: **175°C** 90% life: **10000h**
Diodes Dxxx-35, -35X: limiting current: **35A** repeated inverse voltage: **200V** peak forward voltage: **1,3V** operation temperature: **175°C** 90% life: **10000h**

**Angular
cigarette
lighter plug**



Order No.

TFG104QW

**Universal
cigarette
lighter plug
12V/24V**



Order No.

TCX900AT

**USB car charger
12V»DC 5V/2A
(TC-6682)**



Order No.

TC-6682

**Universal
cigarette
socket
12V/15A
(TC-66 13R)**



Order No.

TYH-65AT

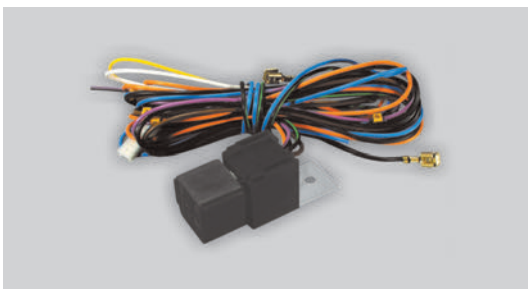
ELECTROTECHNICS

Illuminated
cigarette
lighter socket
TC-6313/12V
TC-6313/24V



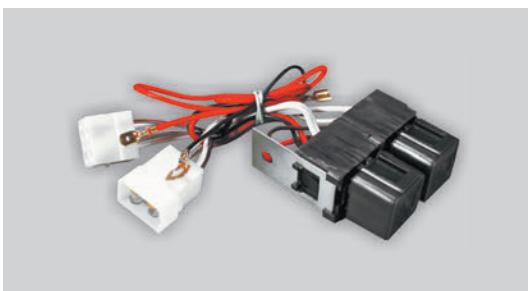
U	Order No.
12	TYH-60AT
24	TYH-61AT

Relay set
for halogen
lamps
ZPS-H3



Order No.
WFZ-02AB

Relay set
for H4 lights
ZPS-03
(with coupling
set)



Order No.
WFZ-22AB
Fiat: 126P, 126P BIS, 126P FL

Trailer outline
lamp wire set



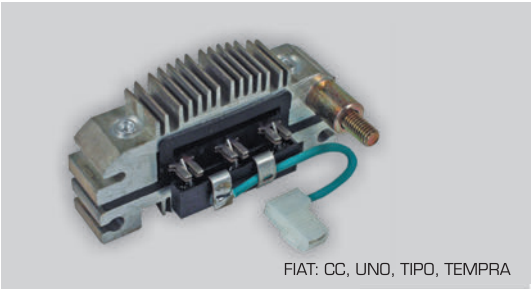
Order No.
WFW-52AA

Universal
oxygen sensors



Type	Order No.
1-wire	TFF-01AB
2-wire	TFF-06AB
3-wire	TFF-11AB
4-wire	TFF-16AB

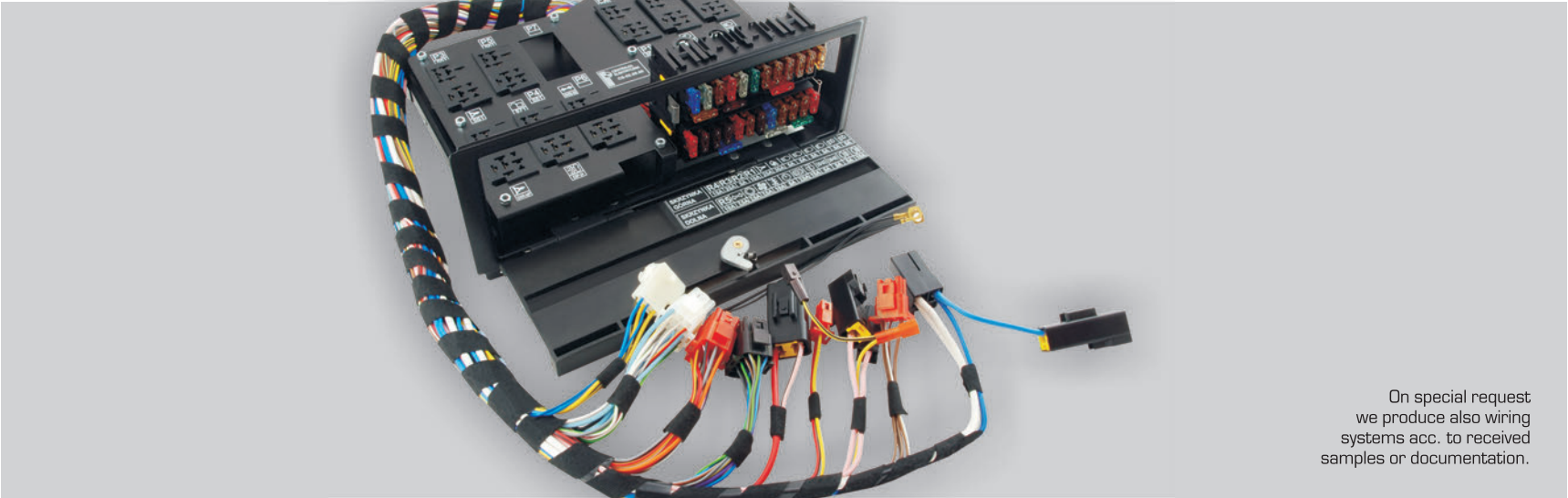
Bridge-rectifier



FIAT: CC, UNO, TIPO, TEMPRA

Order No.
TFD-80AT

Central unit CS-02.000



On special request
we produce also wiring
systems acc. to received
samples or documentation.

ROTATING BEACONS ROTOKIT

Rotokit A



U	Catalog Number	Order No.
12V	83586	TCX021AT
24V	83582	TCX026AT
12/24V	83593	TCX031AT

Rotokit B



U	Catalog Number	Order No.
12V	83585	TCX022AT
24V	83581	TCX027AT
12/24V	83604	TCX032AT

Rotokit P



U	Catalog Number	Order No.
12V	83587	TCX023AT
24V	83583	TCX028AT
12/24V	83600	TCX033AT

AC S.A. is an exclusive distributor of SIRENA S.p.A. on Polish market. On special requests we deliver all kinds of beacons produced by SIRENA.

ROTATING BEACONS ROTOKIT

Rotokit 1M



U	Catalog Number	Order No.
12V	83588	TCX024AT
24V	83584	TCX029AT
12/24V	83591	TCX034AT

Rotokit 3M



U	Catalog Number	Order No.
12V	83589	TCX025AT
24V	83590	TCX030AT
12/24V	83603	TCX035AT

Rotokit FLX



U	Catalog Number	Order No.
12V	88845	TCX041AT
24V	88846	TCX042AT
12/24V	88847	TCX043AT

AC S.A. is an exclusive distributor of SIRENA S.p.A. on Polish market. On special requests we deliver all kinds of beacons produced by SIRENA.

ROTATING BEACONS

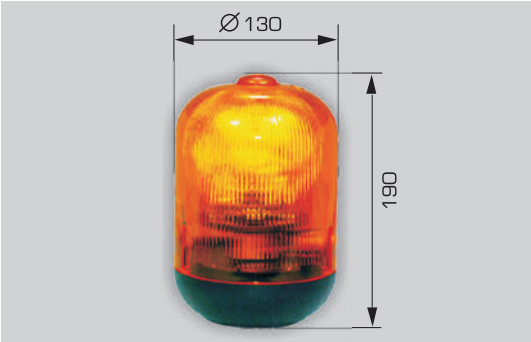
MICROBOULE



Base	Mounting	U	Catalog Number	Order No.
A	PIN	12V	74550	TCXD01AT
P	M12	12V	74556	TCXD03AT
1M	MAGNES	12V	74562	TCXD04AT
3M	MAGNESx3	12V	74565	TCXD05AT
A	PIN	24V	74551	TCXD06AT
P	M12	24V	74557	TCXD08AT
1M	MAGNES	24V	74563	TCXD09AT
3M	MAGNESx3	24V	74566	TCXD10AT

Also available in 12/24V


GF 8.8




Base	Mounting	U	Catalog Number	Order No.
A	PIN	12V	24133	TCXD61AT
P	M12	12V	24137	TCXD63AT
A	PIN	24V	24141	TCXD67AT
P	M12	24V	24144	TCXD69AT

SPARE DOMES

ROKIT	
	
Catalog Number	Order No.
72106	TCXD49AT

MICROBOULE	
	
Catalog Number	Order No.
71157	TCXD16AT

GF 8.8.	
	
Catalog Number	Order No.
71150	TCXD79AT

AC S.A. is an exclusive distributor of SIRENA S.p.A. on Polish market. On special requests we deliver all kinds of beacons produced by SIRENA.

ADAPTER SOCKETS

S



Catalog Number

83001

Order No.

TCX081AT

FZ



Catalog Number

83508

Order No.

TCX082AT

B



Catalog Number

83002

Order No.

TCX084AT

AC S.A. is an exclusive distributor of SIRENA S.p.A. on Polish market. On special requests we deliver all kinds of beacons produced by SIRENA.

ADAPTER SOCKETS

SL



Catalog Number

83498

Order No.

TCX089AT

SP



Catalog Number

83036

Order No.

TCX085AT

SPL/D



Catalog Number

83511

Order No.

TCX090AT

AC S.A. is an exclusive distributor of SIRENA S.p.A. on Polish market. On special requests we deliver all kinds of beacons produced by SIRENA.

HORNS

K70



U	Frequency	Sound level [dB]	Symbol	Order No.
12V	High 450 Hz \pm 5%	112	K70/12V/HIGH	TFK-06AH
12V	Low 340 Hz \pm 5%	112	K70/12V/LOW	TFK-07AH

K91



U	Frequency	Sound level [dB]	Symbol	Order No.
12V	High 420 Hz \pm 5%	112	K91/12V/HIGH	TFK-01AH
12V	Low 345 Hz \pm 5%	112	K91/12V/LOW	TFK-02AH
24V	High 420 Hz \pm 5%	112	K91/24V/HIGH	TFK-04AH
24V	Low 345 Hz \pm 5%	112	K91/24V/LOW	TFK-05AH

T80



U	Frequency	Sound level [dB]	Symbol	Order No.
12 V	High 490 Hz \pm 5%	114	T80/12V/H	TFK-16AH
12 V	Low 410 Hz \pm 5%	114	T80/12V/L	TFK-17AH

T91



U	Frequency	Sound level [dB]	Symbol	Order No.
12 V	High 490 Hz \pm 5%	112	T91/1N/12V HIGH	TFK-11AH
12 V	Low 410 Hz \pm 5%	112	T91/1N/12V LOW	TFK-12AH
24 V	High 490 Hz \pm 5%	112	T91/1N/24V HIGH	TFK-14AH
24 V	Low 410 Hz \pm 5%	112	T91/1N/24V LOW	TFK-15AH

HORNS

M91

M91/L - length = 470
M91/H - length = 430



U	Frequency	Sound level [dB]	Symbol	Order No.
12V	High 390 Hz ± 5%	117	M91/1N/12V HIGH	TFK-41AT
12V	Low 340 Hz ± 5%	117	M91/1N/12V LOW	TFK-42AT
12V	set H+L	117	M91/2/12V	TFK-43BT
24V	High 390 Hz ± 5%	117	M91/1N/24V HIGH	TFK-44AT
24V	Low 340 Hz ± 5%	117	M91/1N/24V LOW	TFK-45AT
24V	set H+L	117	M91/2/24V	TFK-46BT

C91 LUX

C91 LUX/L - length = 500
C91 LUX/H - length = 400

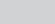



U	Frequency	Sound level [dB]	Symbol	Order No.
12V	High 390 Hz ± 5%	117	C91/1NLUX/12V H	TFK-51AT
12V	Low 340 Hz ± 5%	117	C91/1NLUX/12V L	TFK-52AT
12V	set H+L	117	C91/2LUX/12V	TFK-53BT
24V	High 390 Hz ± 5%	117	C91/1NLUX/24V H	TFK-54AT
24V	Low 340 Hz ± 5%	117	C91/1NLUX/24V L	TFK-55AT
24V	set H+L	117	C91/2LUX/24V	TFK-56BT

ACTC/2EV/12V ACTC/2V/2VP

ACTC/2EV, ACTC/2VP
length = 400



U	Frequency	Sound level [dB]	Symbol	Order No.	
2EV electro- pneumatic valve 	12V	High 430 Hz ± 5% Low 340 Hz ± 5%	118	ACTC/2EV/12V	TFK-61BT
	24V	High 430 Hz ± 5% Low 340 Hz ± 5%	118	ACTC/2EV/24V	TFK-62BT
2VP pneumatic valve 	-	High 430 Hz ± 5% Low 340 Hz ± 5%	118	ACTC/2VP	TFK-63BT

APC/500-600 set

APC 500 - length = 500
APC 600 - length = 600



U	Frequency	Sound level [dB]	Symbol	Order No.
-	High 210 Hz ± 5% Low 170 Hz ± 5%	118	APC/500-600	TFK-69BT

TACHOGRAPH ACCESSORIES

Tachograph charts

Tachograph Charts





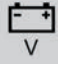


Tachoroll
For digital
Tachographs

Chart code	Speed range	Order No.	PCs
FBM/2-125-24	<125km/h	TGT-11KTK	100
FBM/9-125-3300 (bilateral)	500-3300RPM	TGT-12KTK	100
FBM/14-140-24	<140km/h	TGT-13KTK	100
FBM/21-180-24	<180km/h	TGT-14KTK	100
FBM/22-100-24	<100km/h	TGT-51KTK	100
FBM/DT001		TGT-91QT	3

Accessories

4-pin hall-effect
sensor M22x1,5



Order No.				
TYH-81AT				
				
4xDIN	0..600	6..16	22x1.5	27

TACHOGRAPH ACCESSORIES

**Power supply
cable 0,5m**



Order No.

WYQ-45AA

on offer while stocks last

**4-pin repair
kit**



Order No.

with sleeve

TYH-82AT

without sleeve

TYH-83AT

on offer while stocks last

**Terminals for
tacho-cable
JPT-771**



Order No.

PCs

TYH-84KB

100

PLUGS AND SOCKETS

**7-POL socket 12V
plastic**



ISO 1724



Catalog number	Order No.	PCs
004017	TFG021EB	10
	TFG021KT	100

**7-POL plug 12V
plastic**



ISO 1724



Catalog number	Order No.	PCs
005117	TFG121EB	10
	TFG121KT	100

**7-POL socket 12V
aluminium**



ISO 1724



Catalog number	Order No.	PCs
004317	TFG031EB	10
	TFG031KT	100

**7-POL plug 12V
aluminium**



ISO 1724



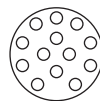
Catalog number	Order No.	PCs
005167	TFG131EB	10
	TFG131KT	100

PLUGS AND SOCKETS

**13-POL socket 12V
plastic**



**ISO 11446
DIN 72570**



Catalog number

004213

Order No.

TFG081EB

PCs

10

**13-POL plug 12V
plastic**



**ISO 11446
DIN 72570**



Catalog number

005113

Order No.

TFG181EB

PCs

10

**7-POL socket 24V
aluminium / N type**



**ISO 1185
DIN 72579**



Catalog number

005809

Order No.

TFG042EB

PCs

10

**7-POL plug 24V
aluminium / N type**



**ISO 1185
DIN 72579**



Catalog number

005909

Order No.

TFG142EB

PCs

10

PLUGS AND SOCKETS

7-POL socket 24V
aluminium / S type



ISO 3731



Catalog number

005816

Order No.

TFGO49EB

PCs

10

7-POL plug 24V
aluminium / S type



ISO 3731



Catalog number

005916

Order No.

TFG149EB

PCs

10

15-POL socket 24V
plastic
ADR/GGVS



ISO 12098



Catalog number

005843

Order No.

TFGO92AT

PCs

1

15-POL plug 24V
plastic / N type



ISO 12098



Catalog number

005946

Order No.

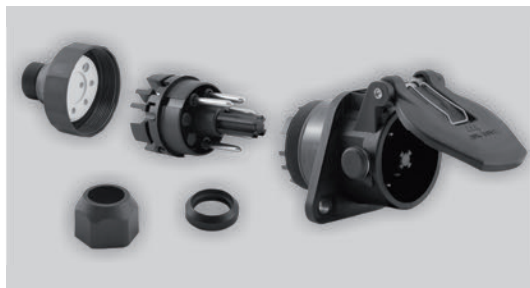
TFG192AT

PCs

1

PLUGS AND SOCKETS

**5-POL socket 24V
ABS**



ISO 7638-1



Catalog number

005855

Order No.

TFG016AT

PCs

1

**5-POL plug 24V
ABS**



ISO 7638-1



Catalog number

005947

Order No.

TFG116AT

PCs

1

**7-POL socket 24V
EBS**



ISO 7638-1



Catalog number

005840

Order No.

TFG014AT

PCs

1

**7-POL plug 24V
ABS/EBS**



ISO 7638-1



Catalog number

005948

Order No.

TFG161AT

PCs

1

TRAILER CABLES

*Trailer cable
with 7-POL plug*



Cable sect.	Order No.
3 m	WFW-11AC
4 m	WFW-12AC
6 m	WFW-13AC
8 m	WFW-14AC
10 m	WFW-15AC
12 m	WFW-16AC
14 m	WFW-17AC
18 m	WFW-19AC

*Trailer cable
with two
7-POL plugs*



Cable sect.	Order No.
3 m	WFW-21AC
4 m	WFW-22AC
6 m	WFW-23AC
8 m	WFW-24AC
10 m	WFW-25AC
12 m	WFW-26AC

We are able to produce specific trailer cables.

*YLY-S cable
(6x0,6+1x1mm²)
PPQ: 100m*



Order No.
TFG300KX

ADAPTERS

ADAPTER 12V
7POL.(WT)
» 13POL.(GN)
[L=0, 1M]



Catalog number

005549

Order No.

TFG201AT

ADAPTER 12V
13POL.(WT)
» 7POL.(GN)
[L=0, 1M]



Catalog number

005552

Order No.

TFG202AT

ADAPTER 12V
7POL.(WT)
» 13POL.(GN)
[L= 1M]



Catalog number

005551

Order No.

TFG203AT

ADAPTER 12V
13POL.(WT)
» 7POL.(GN)
[L= 1M]



Catalog number

005550

Order No.

TFG204AT

ADAPTERS

ADAPTER 12V
13POL.(WT)
» 7POL.(GN)



Catalog number

005546

Order No.

TFG215KW

ADAPTER
MICRO 12V
13POL.(WT)
» 7POL.(GN)



Catalog number

005600

Order No.

TFG219KW

ADAPTER
MICRO 12V
7POL.(WT)
» 13POL.(GN)



Catalog number

005604

Order No.

TFG220AT

ADAPTER
15POL.(WT)
» 2x7POL.
(GN/24V/N/S)



Catalog number

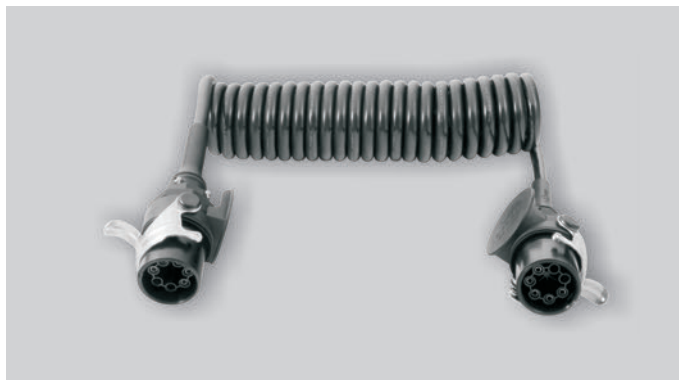
005547

Order No.

TFG218AT

SPIRAL COILS

Spiral coil ABS
 $\varnothing 40 / 4\text{m}$
 / 2 x 5 POL
 plugs / 24V



Catalog number

005594

Order No.

TFG233AT

Spiral coil ABS
 $\varnothing 30 / 4,5\text{m}$
 / 2 x 5 POL
 plugs / 24V



Catalog number

005566

Order No.

TFG231AT

Spiral coil EBS
 $\varnothing 80 / 4,5\text{m}$
 / 2 x 7 POL
 plugs / 24V



Catalog number

005574

Order No.

TFG235AT

SPIRAL COILS

*Spiral coil
ADR/GGVS
Ø80 / 4,5m
/ 2 x 15 POL
plugs / 24V*



Catalog number

005590

Order No.

TFG292AT

*Spiral coil
Ø60 / 4,5m
/ 2 x ALU
plugs / 24V / N*



Catalog number

005524

Order No.

TFG282

*Spiral coil
Ø60 / 4,5m
/ 2 x ALU
pugs / 24V / S*



Catalog number

005525

Order No.

TFG283

SPIRAL COILS

Spiral coils
 $\varnothing 20 / 4m$
 / 2 x ALU 7 POL.
 plugs / 24V



Catalog number

N 005506

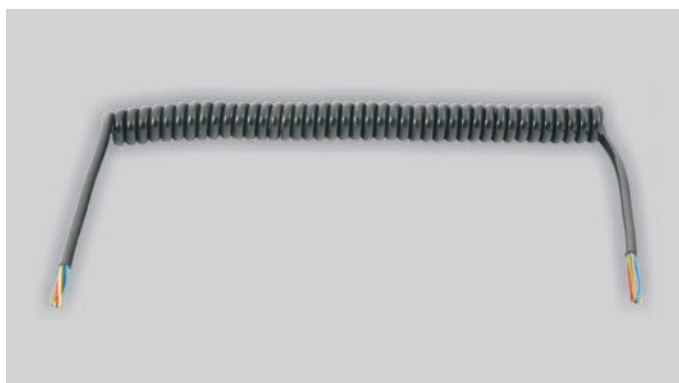
S 005507

Order No.

TFG251AT

TFG252AT

Spiral coils
 $\varnothing 20 / 4m$
 / 12V / 24V
 (6x1+1x1,5mm²)



Catalog number

005505

Order No.

TFG250AT

Spiral coils
 $\varnothing 60 / 4,5m$
 / 12V / 24V
 (6x1+1x2,5mm²)



Catalog number

005520

Order No.

TFG280AT

VARIOUS ACCESSORIES

*Grease nipple
straight*



	Order No.	PCs
M6x1	TGS-02JB	50
M8x1	TGS-04JB	50
M10x1	TGS-06HB	25

*Grease nipple
angular 45°*



	Order No.	PCs
M6x1	TGS-12HB	25
M8x1	TGS-14HB	25
M10x1	TGS-16HB	25

*Grease nipple
angular 90°*



	Order No.	PCs
M6x1	TGS-22HB	25
M8x1	TGS-24HB	25
M10x1	TGS-26HB	25

*Metal
valve cup*



Order No.	PCs
TGK-60JN	50

VARIOUS ACCESSORIES

**Long valve
cores**



Internal thread: Ven 5

Order No.

PCs

TGK-50KE

100

Opening pressure: 0,08-0,4 MPa
Leaktightness: 0,03-0,8 MPa

**Short valve
cores**



Internal thread: Ven 5

Order No.

Sztuk

TGK-40KD

100

Opening pressure: 0,08 - 0,4 MPa
Leaktightness: 0,03 - 0,8 MPa

**Air valve chuck
- plastic gate**



Order No.

PCs

Ø 6mm

TGK-01CB

4

Ø 8mm

TGK-03CB

4

**Air valve chuck
- metal gate**



Order No.

PCs

Ø 6mm

TGK-02EB

10

Ø 8mm

TGK-04EB

10

VARIOUS ACCESSORIES

Air nozzle



Order No.	PCs
TGK-12EB	10

Pump kits



Długość węża (m)	Order No.
3,5	TGK-89AA
8	TGK-90AA
12	TGK-93AA
16	TGK-94AA
18	TGK-95AA

on special request other lengths

*Valve fastener
1431*



Order No.
TGK-23QW

*Straight rubber
valve extension*



Order No.
TGK-11QW

VARIOUS ACCESSORIES

*PVC hoses
general-purpose*



Inside diameter dw (mm)	Thickness (mm)	Order No.	Length (mb)
4	1.0	TPI040KK	100
5	1.0	TPI050KK	100
6	1.5	TPI060KK	100
6	2.0	TPI061JK	50
8	1.5	TPI080JK	50
8	2.0	TPI081JK	50
10	1.5	TPI100JK	50
10	2.0	TPI101JK	50
12	2.0	TPI120JK	50
14	2.5	TPI141JK	50
16	2.0	TPI161JK	50

Armoured hoses



Inside diameter	Thickness (mm)	Order No.	Length (mb)
5	2,5	TPX-05JB	50
6	2,5	TPX-06JB	50
8	2,5	TPX-08JB	50
10	2,5	TPX-10JB	50
12,5	3,0	TPX-12JB	50
16	3,5	TPX-16JB	50
19	3,5	TPX-19JB	50
25	4,5	TPX-25HB	25

ACCESS MAP



AC Spółka Akcyjna
15-181 Białystok
ul. 42 Pułku Piechoty 50

Trade Department:
tel. +48 85 74 38 147, +48 85 74 38 168
faks +48 85 6538649
www.ac.com.pl, e-mail: info@ac.com.pl



AC Spółka Akcyjna

AC Spółka Akcyjna

15-181 Białystok, ul. 42 Pułku Piechoty 50, Poland
tel. +48 85 7438100, fax +48 85 6539383
www.ac.com.pl, e-mail: info@ac.com.pl